



ELECTRONIC COPY

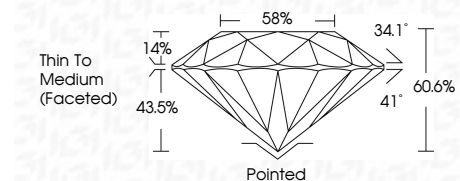
LG752575272
Report verification at igi.org



December 16, 2025
IGI Report Number LG752575272
Description LABORATORY GROWN DIAMOND
Shape and Cutting Style ROUND BRILLIANT
Measurements 9.35 - 9.40 X 5.68 MM

GRADING RESULTS

Carat Weight 3.03 CARATS
Color Grade D
Clarity Grade VS 1
Cut Grade IDEAL

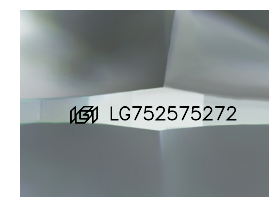


ADDITIONAL GRADING INFORMATION

Polish EXCELLENT
Symmetry EXCELLENT
Fluorescence NONE
Inscription(s) LG752575272
Comments: HEARTS & ARROWS
This Laboratory Grown Diamond was created by Chemical Vapor Deposition (CVD) growth process. Type IIa

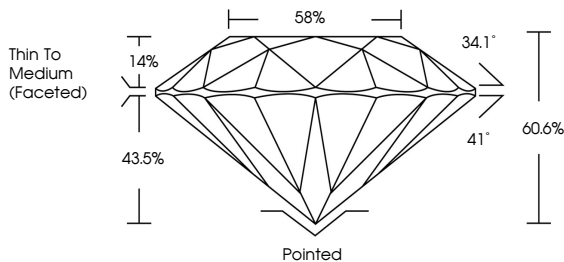


December 16, 2025
IGI Report No LG752575272
ROUND BRILLIANT
9.35 - 9.40 X 5.68 MM
3.03 CARATS
D
VS 1
IDEAL
60.6%
58%
Thin To Medium (Faceted)
Pointed
EXCELLENT
EXCELLENT
NONE
NONE
IGI LG752575272
Comments: HEARTS & ARROWS
This Laboratory Grown Diamond was created by Chemical Vapor Deposition (CVD) growth process. Type IIa

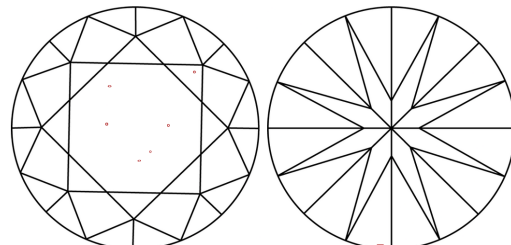


Sample Image Used

PROPORTIONS



CLARITY CHARACTERISTICS



KEY TO SYMBOLS

Red symbols indicate internal characteristics.
Green symbols indicate external characteristics.



COLOR

Color scale table with categories D, E, F, G, H, I, J, Faint, Very Light, Light

CLARITY

Clarity scale table with categories FL, IF, VS 1-2, VS 1-2, SI 1-2, I 1-3, Flawless, Internally Flawless, Very Very Slightly Included, Very Slightly Included, Slightly Included, Included

