



**LABORATORY GROWN DIAMOND REPORT**

December 15, 2025  
 IGI Report Number **LG752581852**  
 Description **LABORATORY GROWN DIAMOND**  
 Shape and Cutting Style **HEART BRILLIANT**  
 Measurements **3.72 X 4.21 X 2.58 MM**

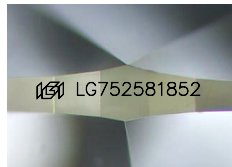
**GRADING RESULTS**

Carat Weight **0.24 CARAT**  
 Color Grade **FANCY VIVID GREENISH BLUE**  
 Clarity Grade **VS 1**

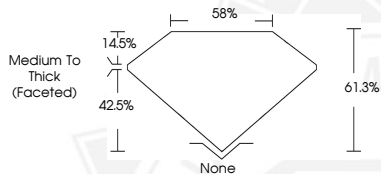
**ADDITIONAL GRADING INFORMATION**

Polish **VERY GOOD**  
 Symmetry **VERY GOOD**  
 Fluorescence **NONE**  
 Inscription(s) **IGI LG752581852**

Comments: This Laboratory Grown Diamond was created by Chemical Vapor Deposition (CVD) growth process. Indications of post-growth treatment.



Sample Image Used



December 15, 2025  
 IGI Report Number **LG752581852**  
**HEART BRILLIANT**  
**LABORATORY GROWN DIAMOND**  
**3.72 X 4.21 X 2.58 MM**  
 Carat Weight **0.24 CARAT**  
 Color Grade **FANCY VIVID GREENISH BLUE**  
 Clarity Grade **VS 1**  
 Polish **VERY GOOD**  
 Symmetry **VERY GOOD**  
 Fluorescence **NONE**  
 Inscription(s) **IGI LG752581852**

Comments: This Laboratory Grown Diamond was created by Chemical Vapor Deposition (CVD) growth process. Indications of post-growth treatment.



December 15, 2025  
 IGI Report Number **LG752581852**  
**HEART BRILLIANT**  
**LABORATORY GROWN DIAMOND**  
**3.72 X 4.21 X 2.58 MM**  
 Carat Weight **0.24 CARAT**  
 Color Grade **FANCY VIVID GREENISH BLUE**  
 Clarity Grade **VS 1**  
 Polish **VERY GOOD**  
 Symmetry **VERY GOOD**  
 Fluorescence **NONE**  
 Inscription(s) **IGI LG752581852**

Comments: This Laboratory Grown Diamond was created by Chemical Vapor Deposition (CVD) growth process. Indications of post-growth treatment.



THIS DOCUMENT WAS PRODUCED WITH THE FOLLOWING SECURITY MEASURES: SPECIAL DOCUMENT PAPER, INK SCREENS, WATERMARK, BACKGROUND DESIGNS, HOLOGRAM AND OTHER SECURITY FEATURES NOT LISTED AND DO EXCEED DOCUMENT SECURITY INDUSTRY GUIDELINES.