



ELECTRONIC COPY

LABORATORY GROWN DIAMOND REPORT

February 12, 2026  
IGI Report Number LG752597376  
Description LABORATORY GROWN DIAMOND  
Shape and Cutting Style CUT CORNERED RECTANGULAR MODIFIED BRILLIANT  
Measurements 8.48 X 6.05 X 4.26 MM

GRADING RESULTS

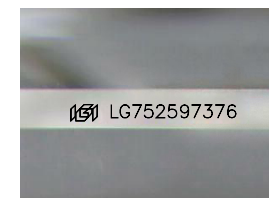
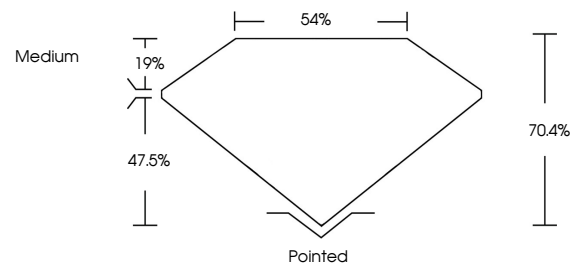
Carat Weight 2.08 CARATS  
Color Grade FANCY VIVID PINK  
Clarity Grade VVS 2

ADDITIONAL GRADING INFORMATION

Polish EXCELLENT  
Symmetry EXCELLENT  
Fluorescence SLIGHT  
Inscription(s) IGI LG752597376

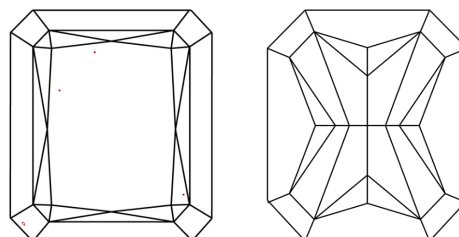
Comments: This Laboratory Grown Diamond was created by Chemical Vapor Deposition (CVD) growth process.  
Indications of post-growth treatment.

PROPORTIONS



Sample Image Used

CLARITY CHARACTERISTICS



KEY TO SYMBOLS

Red symbols indicate internal characteristics.  
Green symbols indicate external characteristics.

COLOR

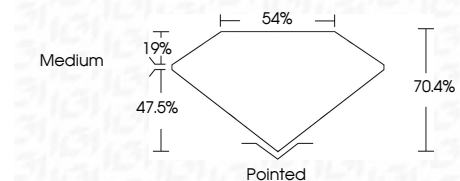
D E F G H I J Faint Very Light Light

CLARITY

FL IF VVS<sup>1-2</sup> VS<sup>1-2</sup> SI<sup>1-2</sup> I<sup>1-3</sup>  
Flawless Internally Flawless Very Very Slightly Included Very Slightly Included Slightly Included Included



February 12, 2026  
IGI Report Number LG752597376  
Description LABORATORY GROWN DIAMOND  
Shape and Cutting Style CUT CORNERED RECTANGULAR MODIFIED BRILLIANT  
Measurements 8.48 X 6.05 X 4.26 MM  
GRADING RESULTS  
Carat Weight 2.08 CARATS  
Color Grade FANCY VIVID PINK  
Clarity Grade VVS 2



ADDITIONAL GRADING INFORMATION

Polish EXCELLENT  
Symmetry EXCELLENT  
Fluorescence SLIGHT  
Inscription(s) IGI LG752597376  
Comments: This Laboratory Grown Diamond was created by Chemical Vapor Deposition (CVD) growth process.  
Indications of post-growth treatment.



February 12, 2026  
IGI Report No LG752597376  
CUT CORNERED RECT. MODIFIED BRILLIANT  
8.48 X 6.05 X 4.26 MM  
2.08 CARATS  
FANCY VIVID PINK  
VVS 2  
70.4%  
54%  
Medium  
Pointed  
EXCELLENT  
EXCELLENT  
SLIGHT  
IGI LG752597376  
Comments: This Laboratory Grown Diamond was created by Chemical Vapor Deposition (CVD) growth process.  
Indications of post-growth treatment.