



ELECTRONIC COPY

LABORATORY GROWN DIAMOND REPORT

December 2, 2025	
IGI Report Number	LG752599791
Description	LABORATORY GROWN DIAMOND
Shape and Cutting Style	EMERALD CUT
Measurements	9.43 X 6.51 X 4.55 MM

GRADING RESULTS

Carat Weight	2.76 CARATS
Color Grade	H
Clarity Grade	SI 1

ADDITIONAL GRADING INFORMATION

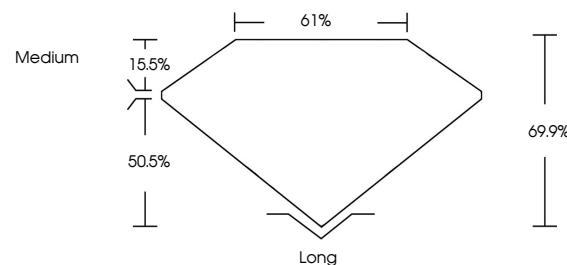
Polish	EXCELLENT
Symmetry	EXCELLENT
Fluorescence	NONE

Inscription(s) LG752599791

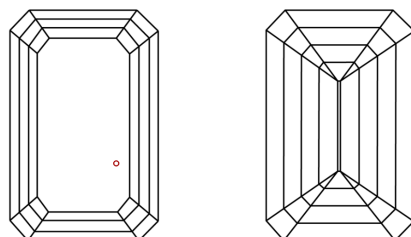
Comments: This Laboratory Grown Diamond was created by Chemical Vapor Deposition (CVD) growth process.
Type IIa

LG752599791
Report verification at [igi.org](https://www.igi.org)

PROPORTIONS

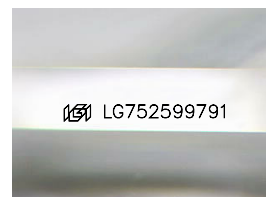


CLARITY CHARACTERISTICS



KEY TO SYMBOLS

Red symbols indicate internal characteristics.
Green symbols indicate external characteristics.



Sample Image Used

COLOR

D E F G H I J Faint Very Light Light

CLARITY

FL	IF	VVS ¹⁻²	VS ¹⁻²	SI ¹⁻²	I ¹⁻³
Flawless	Internally Flawless	Very Very Slightly Included	Very Slightly Included	Slightly Included	Included

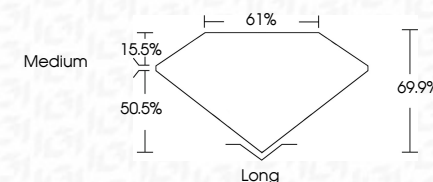
LABORATORY GROWN DIAMOND REPORT



December 2, 2025	
IGI Report Number	LG752599791
Description	LABORATORY GROWN DIAMOND
Shape and Cutting Style	EMERALD CUT
Measurements	9.43 X 6.51 X 4.55 MM

GRADING RESULTS

Carat Weight	2.76 CARATS
Color Grade	H
Clarity Grade	SI 1



ADDITIONAL GRADING INFORMATION

Polish	EXCELLENT
Symmetry	EXCELLENT
Fluorescence	NONE
Inscription(s)	163 LG75259979

Comments: This Laboratory Grown Diamond was created by Chemical Vapor Deposition (CVD) growth process.
Type IIa



www.igi.org

© IGI 2020, International Gemological Institute

FD - 10 20



THIS DOCUMENT WAS PRODUCED WITH THE FOLLOWING SECURITY MEASURES: SPECIAL DOCUMENT PAPER, INK SCREENS, WATERMARK, BACKGROUND DESIGNS, HOLOGRAM AND OTHER SECURITY FEATURES NOT LISTED AND DO EXCEED DOCUMENT SECURITY INDUSTRY GUIDELINE

December 2, 2025
 LGI Report No LG752599791

2.43 X 6.51 X 4.55 MM	2.7% CARATS
Carat Weight	H
Color Grade	S I
Clarity Grade	69.9%
Depth	61%
Table	Medium
Grade	Long
Quiet	EXCELLENT
Polish	EXCELLENT
Symmetry	NONE
Fluorescence	

Comments:
This Laboratory Grown Diamond was created by Chemical Vapor Deposition (CVD) growth process.