



December 8, 2025

IGI Report Number LG753501757
**CUT CORNERED RECTANGULAR
MODIFIED BRILLIANT**
LABORATORY GROWN DIAMOND
4.19 X 2.93 X 1.99 MM

Carat Weight **0.23 CARAT**
Color Grade **FANCY VIVID PINK**
Clarity Grade **VS 2**
Polish **VERY GOOD**
Symmetry **GOOD**
Fluorescence **STRONG**
Inscription(s) **IGI LG753501757**

Comments: This Laboratory Grown Diamond was created by Chemical Vapor Deposition (CVD) growth process. Indications of post-growth treatment.

LABORATORY GROWN DIAMOND REPORT

December 8, 2025

IGI Report Number

LG753501757

Description

LABORATORY GROWN DIAMOND

Shape and Cutting Style

**CUT CORNERED RECTANGULAR MODIFIED
BRILLIANT**

Measurements

4.19 X 2.93 X 1.99 MM

GRADING RESULTS

Carat Weight

0.23 CARAT

Color Grade

FANCY VIVID PINK

Clarity Grade

VS 2

ADDITIONAL GRADING INFORMATION

Polish

VERY GOOD

Symmetry

GOOD

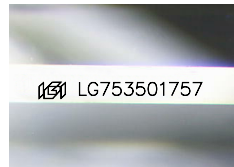
Fluorescence

STRONG

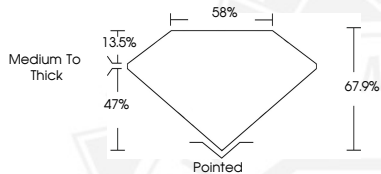
Inscription(s)

IGI LG753501757

Comments: This Laboratory Grown Diamond was created by Chemical Vapor Deposition (CVD) growth process. Indications of post-growth treatment.



Sample Image Used



December 8, 2025

IGI Report Number LG753501757
**CUT CORNERED RECTANGULAR
MODIFIED BRILLIANT**
LABORATORY GROWN DIAMOND
4.19 X 2.93 X 1.99 MM

Carat Weight **0.23 CARAT**
Color Grade **FANCY VIVID PINK**
Clarity Grade **VS 2**
Polish **VERY GOOD**
Symmetry **GOOD**
Fluorescence **STRONG**
Inscription(s) **IGI LG753501757**

Comments: This Laboratory Grown Diamond was created by Chemical Vapor Deposition (CVD) growth process. Indications of post-growth treatment.



THIS DOCUMENT WAS PRODUCED WITH THE FOLLOWING SECURITY MEASURES: SPECIAL DOCUMENT PAPER, INK SCREENS, WATERMARK, BACKGROUND DESIGNS, HOLOGRAM AND OTHER SECURITY FEATURES NOT LISTED AND DO EXCEED DOCUMENT SECURITY INDUSTRY GUIDELINES.