



ELECTRONIC COPY

LG753503740
Report verification at igi.org

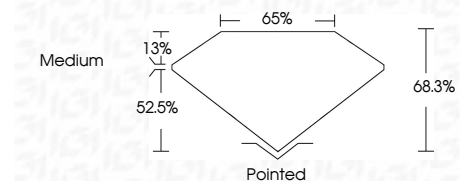


November 30, 2025
IGI Report Number LG753503740
Description LABORATORY GROWN DIAMOND
Shape and Cutting Style CUT CORNERED RECTANGULAR MODIFIED BRILLIANT

Measurements 10.41 X 7.19 X 4.91 MM

GRADING RESULTS

Carat Weight 3.10 CARATS
Color Grade H
Clarity Grade VS 1

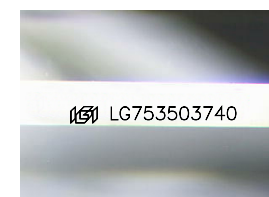


ADDITIONAL GRADING INFORMATION

Polish EXCELLENT
Symmetry EXCELLENT
Fluorescence NONE
Inscription(s) LG753503740
Comments: This Laboratory Grown Diamond was created by Chemical Vapor Deposition (CVD) growth process. Type IIa

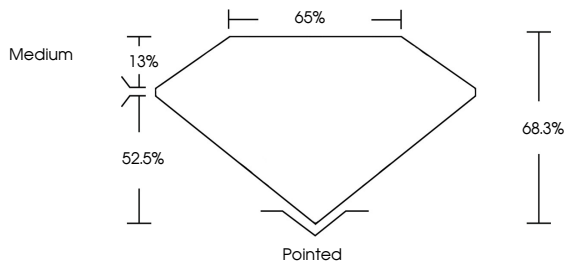


November 30, 2025
IGI Report No LG753503740
CUT CORNERED RECT. MODIFIED BRILLIANT
3.10 CARATS H
10.41 X 7.19 X 4.91 MM
Color Grade H
Clarity Grade VS 1
Depth 68.3%
Table 52.5%
Girdle Medium
Culet Pointed
Polish EXCELLENT
Symmetry EXCELLENT
Fluorescence NONE
Inscription(s) LG753503740
Comments: This Laboratory Grown Diamond was created by Chemical Vapor Deposition (CVD) growth process. Type IIa

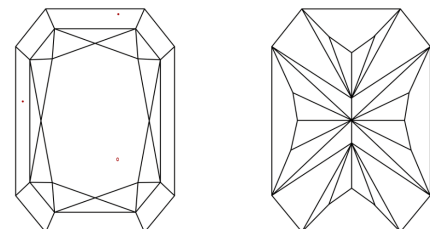


Sample Image Used

PROPORTIONS



CLARITY CHARACTERISTICS



KEY TO SYMBOLS

Red symbols indicate internal characteristics.
Green symbols indicate external characteristics.

COLOR

D E F G H I J Faint Very Light Light

CLARITY

FL IF VS 1-2 VS 2-3 SI 1-2 I 1-3
Flawless Internally Flawless Very Very Slightly Included Very Slightly Included Slightly Included Included

