



**ELECTRONIC COPY**

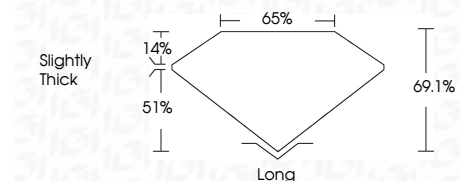
LG753510700  
Report verification at igi.org



December 2, 2025  
IGI Report Number **LG753510700**  
Description **LABORATORY GROWN DIAMOND**  
Shape and Cutting Style **EMERALD CUT**  
Measurements **9.68 X 6.90 X 4.77 MM**

**GRADING RESULTS**

Carat Weight **3.16 CARATS**  
Color Grade **H**  
Clarity Grade **VS 1**



**ADDITIONAL GRADING INFORMATION**

Polish **EXCELLENT**  
Symmetry **EXCELLENT**  
Fluorescence **NONE**  
Inscription(s) **IGI LG753510700**  
Comments: This Laboratory Grown Diamond was created by Chemical Vapor Deposition (CVD) growth process. Type IIa



December 2, 2025  
IGI Report No LG753510700  
**EMERALD CUT**  
9.68 X 6.90 X 4.77 MM  
3.16 CARATS  
H  
VS 1  
69.1%  
65%  
Slightly Thick  
Long  
EXCELLENT  
EXCELLENT  
NONE  
IGI LG753510700  
Comments: This Laboratory Grown Diamond was created by Chemical Vapor Deposition (CVD) growth process. Type IIa

**LABORATORY GROWN DIAMOND REPORT**

December 2, 2025  
IGI Report Number **LG753510700**  
Description **LABORATORY GROWN DIAMOND**  
Shape and Cutting Style **EMERALD CUT**  
Measurements **9.68 X 6.90 X 4.77 MM**

**GRADING RESULTS**

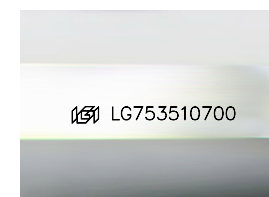
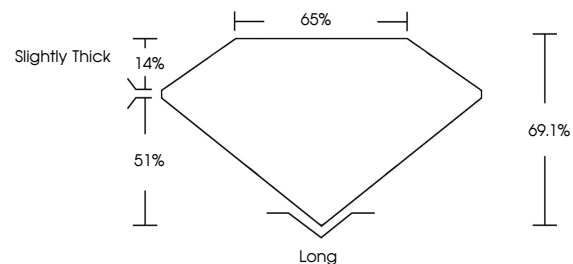
Carat Weight **3.16 CARATS**  
Color Grade **H**  
Clarity Grade **VS 1**

**ADDITIONAL GRADING INFORMATION**

Polish **EXCELLENT**  
Symmetry **EXCELLENT**  
Fluorescence **NONE**  
Inscription(s) **IGI LG753510700**

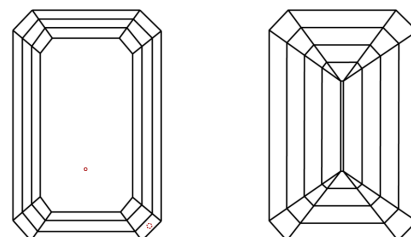
Comments: This Laboratory Grown Diamond was created by Chemical Vapor Deposition (CVD) growth process. Type IIa

**PROPORTIONS**



Sample Image Used

**CLARITY CHARACTERISTICS**



**KEY TO SYMBOLS**

Red symbols indicate internal characteristics.  
Green symbols indicate external characteristics.

**COLOR**

D E F G H I J Faint Very Light Light

**CLARITY**

FL	IF	VS <sup>1-2</sup>	VS <sup>1-2</sup>	SI <sup>1-2</sup>	I <sup>1-3</sup>
Flawless	Internally Flawless	Very Very Slightly Included	Very Slightly Included	Slightly Included	Included

