



ELECTRONIC COPY

LABORATORY GROWN DIAMOND REPORT

December 4, 2025  
IGI Report Number LG753514167  
Description LABORATORY GROWN DIAMOND  
Shape and Cutting Style CUT CORNERED RECTANGULAR MODIFIED BRILLIANT  
Measurements 9.96 X 7.23 X 4.92 MM

GRADING RESULTS

Carat Weight 3.07 CARATS  
Color Grade D  
Clarity Grade SI 1

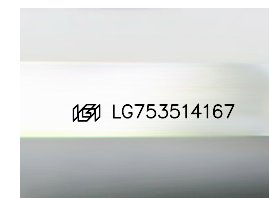
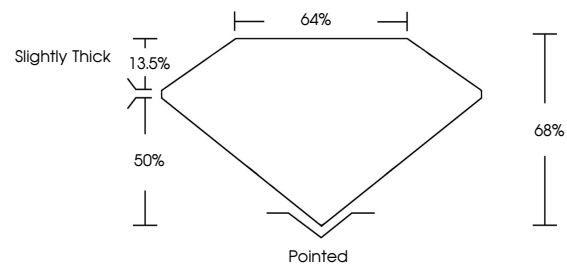
ADDITIONAL GRADING INFORMATION

Polish EXCELLENT  
Symmetry EXCELLENT  
Fluorescence NONE

Inscription(s) LG753514167

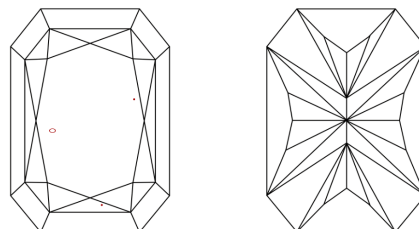
Comments: This Laboratory Grown Diamond was created by Chemical Vapor Deposition (CVD) growth process.  
Type IIa

PROPORTIONS



Sample Image Used

CLARITY CHARACTERISTICS



KEY TO SYMBOLS

Red symbols indicate internal characteristics.  
Green symbols indicate external characteristics.

COLOR

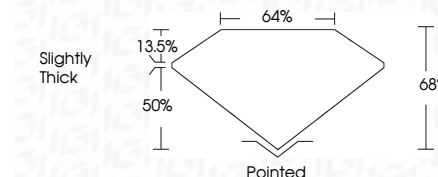
D E F G H I J Faint Very Light Light

CLARITY

FL IF VS<sup>1-2</sup> VS<sup>1-2</sup> SI<sup>1-2</sup> I<sup>1-3</sup>  
Flawless Internally Flawless Very Very Slightly Included Very Slightly Included Slightly Included Included



December 4, 2025  
IGI Report Number LG753514167  
Description LABORATORY GROWN DIAMOND  
Shape and Cutting Style CUT CORNERED RECTANGULAR MODIFIED BRILLIANT  
Measurements 9.96 X 7.23 X 4.92 MM  
GRADING RESULTS  
Carat Weight 3.07 CARATS  
Color Grade D  
Clarity Grade SI 1



ADDITIONAL GRADING INFORMATION

Polish EXCELLENT  
Symmetry EXCELLENT  
Fluorescence NONE  
Inscription(s) LG753514167  
Comments: This Laboratory Grown Diamond was created by Chemical Vapor Deposition (CVD) growth process.  
Type IIa



IGI



December 4, 2025  
IGI Report No LG753514167  
CUT CORNERED RECT. MODIFIED BRILLIANT  
3.07 CARATS  
D  
9.96 X 7.23 X 4.92 MM  
Color Grade D  
Clarity Grade SI 1  
Depth 68%  
Table 50%  
Girdle Slightly Thick  
Culet Pointed  
Polish EXCELLENT  
Symmetry EXCELLENT  
Fluorescence NONE  
Inscription(s) LG753514167

Comments: This Laboratory Grown Diamond was created by Chemical Vapor Deposition (CVD) growth process.  
Type IIa