



ELECTRONIC COPY

LG754503449
Report verification at igi.org



December 3, 2025

IGI Report Number **LG754503449**

Description **LABORATORY GROWN DIAMOND**

Shape and Cutting Style **PRINCESS CUT**

Measurements **8.30 X 8.29 X 5.98 MM**

GRADING RESULTS

Carat Weight **3.56 CARATS**

Color Grade **E**

Clarity Grade **VS 1**

December 3, 2025

IGI Report Number **LG754503449**

Description **LABORATORY GROWN DIAMOND**

Shape and Cutting Style **PRINCESS CUT**

Measurements **8.30 X 8.29 X 5.98 MM**

GRADING RESULTS

Carat Weight **3.56 CARATS**

Color Grade **E**

Clarity Grade **VS 1**

ADDITIONAL GRADING INFORMATION

Polish **EXCELLENT**

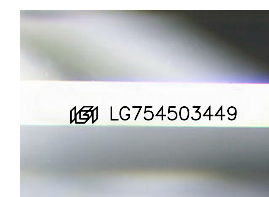
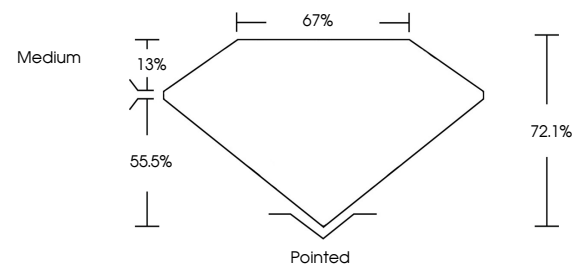
Symmetry **EXCELLENT**

Fluorescence **NONE**

Inscription(s) **IGI LG754503449**

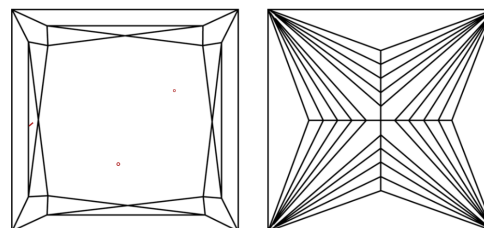
Comments: This Laboratory Grown Diamond was created by Chemical Vapor Deposition (CVD) growth process. Type IIa

PROPORTIONS



Sample Image Used

CLARITY CHARACTERISTICS



KEY TO SYMBOLS

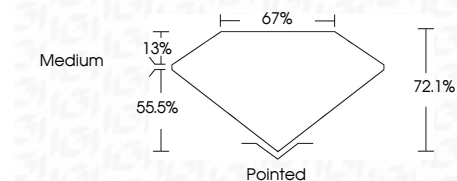
Red symbols indicate internal characteristics.
Green symbols indicate external characteristics.

COLOR

D E F G H I J Faint Very Light Light

CLARITY

FL	IF	VS ¹⁻²	VS ¹⁻²	SI ¹⁻²	I ¹⁻³
Flawless	Internally Flawless	Very Very Slightly Included	Very Slightly Included	Slightly Included	Included



ADDITIONAL GRADING INFORMATION

Polish **EXCELLENT**

Symmetry **EXCELLENT**

Fluorescence **NONE**

Inscription(s) **IGI LG754503449**

Comments: This Laboratory Grown Diamond was created by Chemical Vapor Deposition (CVD) growth process. Type IIa



December 3, 2025
IGI Report No LG754503449
PRINCESS CUT

3.56 CARATS
E

8.30 X 8.29 X 5.98 MM

Carat Weight
Color Grade
Clarity Grade
Depth
Table
Girdle
Medium

VS 1
72.1%
67%

Pointed
EXCELLENT
EXCELLENT
NONE
IGI LG754503449

Culet
Polish
Symmetry
Fluorescence
Inscription(s)

Comments: This Laboratory Grown Diamond was created by Chemical Vapor Deposition (CVD) growth process. Type IIa