



ELECTRONIC COPY

LG754503452
Report verification at igi.org



December 4, 2025
IGI Report Number **LG754503452**
Description **LABORATORY GROWN DIAMOND**
Shape and Cutting Style **PRINCESS CUT**
Measurements **8.65 X 8.61 X 6.21 MM**
GRADING RESULTS
Carat Weight **4.06 CARATS**
Color Grade **G**
Clarity Grade **VS 1**

December 4, 2025
IGI Report Number **LG754503452**
Description **LABORATORY GROWN DIAMOND**
Shape and Cutting Style **PRINCESS CUT**
Measurements **8.65 X 8.61 X 6.21 MM**

GRADING RESULTS

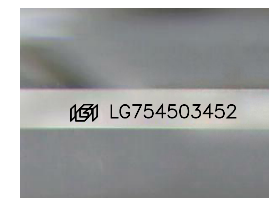
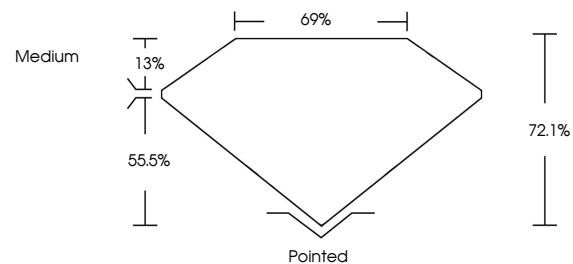
Carat Weight **4.06 CARATS**
Color Grade **G**
Clarity Grade **VS 1**

ADDITIONAL GRADING INFORMATION

Polish **EXCELLENT**
Symmetry **EXCELLENT**
Fluorescence **NONE**
Inscription(s) **IGI LG754503452**

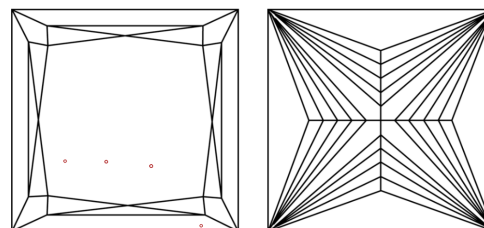
Comments: This Laboratory Grown Diamond was created by Chemical Vapor Deposition (CVD) growth process. Type IIa

PROPORTIONS



Sample Image Used

CLARITY CHARACTERISTICS



KEY TO SYMBOLS

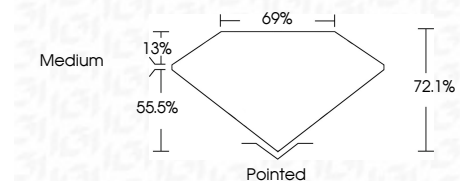
Red symbols indicate internal characteristics.
Green symbols indicate external characteristics.

COLOR

D E F G H I J Faint Very Light Light

CLARITY

FL	IF	VS ¹⁻²	VS ¹⁻²	SI ¹⁻²	I ¹⁻³
Flawless	Internally Flawless	Very Very Slightly Included	Very Slightly Included	Slightly Included	Included



ADDITIONAL GRADING INFORMATION

Polish **EXCELLENT**
Symmetry **EXCELLENT**
Fluorescence **NONE**
Inscription(s) **IGI LG754503452**
Comments: This Laboratory Grown Diamond was created by Chemical Vapor Deposition (CVD) growth process. Type IIa



December 4, 2025
IGI Report No **LG754503452**
PRINCESS CUT
4.06 CARATS
Carat Weight **G**
Color Grade **VS 1**
Clarity Grade **72.1%**
Depth **69%**
Table **Medium**
Girdle **Pointed**
Culet **EXCELLENT**
Polish **EXCELLENT**
Symmetry **EXCELLENT**
Fluorescence **NONE**
Inscription(s) **IGI LG754503452**
Comments: This Laboratory Grown Diamond was created by Chemical Vapor Deposition (CVD) growth process. Type IIa