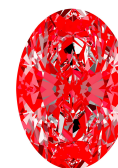




Light Performance Grade: Exceptional



Structured Light Environment Representation



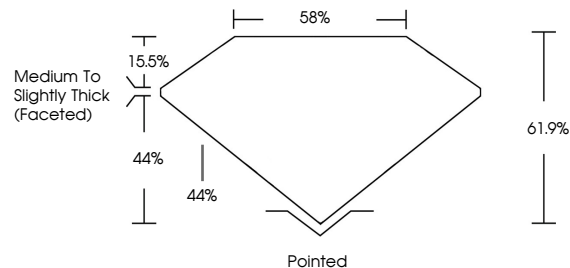
COLOR

D E F G H I J Faint Very Light Light

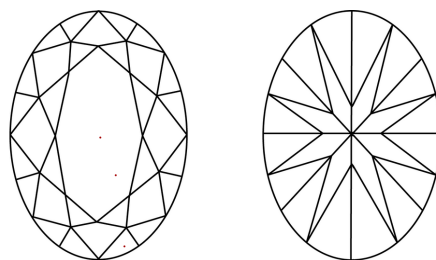
CLARITY

Table with columns: FL, IF, VS 1-2, VS 1-2, SI 1-2, I 1-3 and corresponding descriptions: Flawless, Internally Flawless, Very Very Slightly Included, Very Slightly Included, Slightly Included, Included.

PROPORTIONS



CLARITY CHARACTERISTICS



KEY TO SYMBOLS

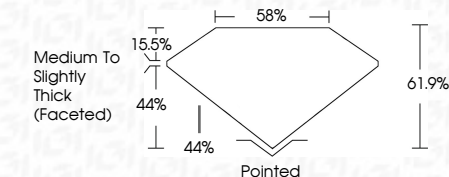
Red symbols indicate internal characteristics.
Green symbols indicate external characteristics.



Sample Image Used



December 1, 2025
IGI Report Number: LG754504047
Description: LABORATORY GROWN DIAMOND
Shape and Cutting Style: OVAL BRILLIANT
Measurements: 12.27 X 8.29 X 5.13 MM
GRADING RESULTS
Carat Weight: 3.19 CARATS
Color Grade: D
Clarity Grade: VVS 2



ADDITIONAL GRADING INFORMATION

Polish: EXCELLENT
Symmetry: EXCELLENT
Fluorescence: NONE
Inscription(s): IGI LG754504047
Comments: This Laboratory Grown Diamond was created by Chemical Vapor Deposition (CVD) growth process. Type IIa



IGI

December 1, 2025
IGI Report No LG754504047
OVAL BRILLIANT
12.27 X 8.29 X 5.13 MM
Carat Weight: 3.19 CARATS
Color Grade: D
Clarity Grade: VVS 2
Table: 58%
Depth: 61.9%
Girdle: Medium To Slightly Thick (Faceted)
Culet: Pointed
Polish: EXCELLENT
Symmetry: EXCELLENT
Fluorescence: NONE
Inscription(s): IGI LG754504047

Comments: This Laboratory Grown Diamond was created by Chemical Vapor Deposition (CVD) growth process. Type IIa

