



ELECTRONIC COPY

LG754508000
Report verification at igi.org



December 24, 2025
IGI Report Number **LG754508000**
Description **LABORATORY GROWN DIAMOND**
Shape and Cutting Style **EMERALD CUT**
Measurements **11.94 X 8.07 X 5.42 MM**
GRADING RESULTS
Carat Weight **5.08 CARATS**
Color Grade **D**
Clarity Grade **INTERNALLY FLAWLESS**

December 24, 2025
IGI Report Number **LG754508000**
Description **LABORATORY GROWN DIAMOND**
Shape and Cutting Style **EMERALD CUT**
Measurements **11.94 X 8.07 X 5.42 MM**

GRADING RESULTS

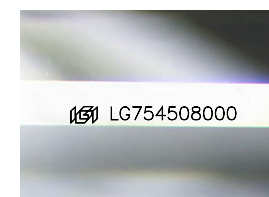
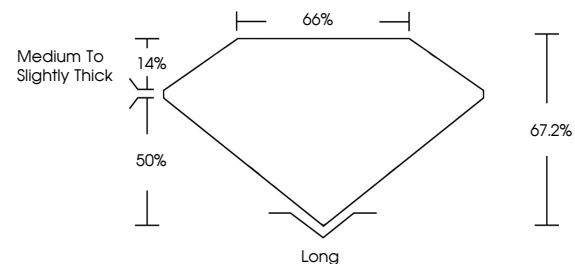
Carat Weight **5.08 CARATS**
Color Grade **D**
Clarity Grade **INTERNALLY FLAWLESS**

ADDITIONAL GRADING INFORMATION

Polish **EXCELLENT**
Symmetry **EXCELLENT**
Fluorescence **NONE**
Inscription(s) **IGI LG754508000**

Comments: As Grown - No indication of post-growth treatment.
This Laboratory Grown Diamond was created by High Pressure High Temperature (HPHT) growth process.
Type II

PROPORTIONS



Sample Image Used

CLARITY CHARACTERISTICS



KEY TO SYMBOLS

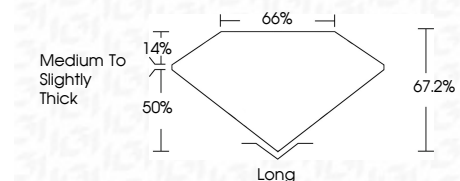
Red symbols indicate internal characteristics.
Green symbols indicate external characteristics.

COLOR

D E F G H I J Faint Very Light Light

CLARITY

FL	IF	VS ¹⁻²	VS ¹⁻²	SI ¹⁻²	I ¹⁻³
Flawless	Internally Flawless	Very Very Slightly Included	Very Slightly Included	Slightly Included	Included



ADDITIONAL GRADING INFORMATION

Polish **EXCELLENT**
Symmetry **EXCELLENT**
Fluorescence **NONE**
Inscription(s) **IGI LG754508000**
Comments: As Grown - No indication of post-growth treatment.
This Laboratory Grown Diamond was created by High Pressure High Temperature (HPHT) growth process.
Type II



December 24, 2025
IGI Report No LG754508000
EMERALD CUT
11.94 X 8.07 X 5.42 MM
5.08 CARATS
D
Color Grade
Clarity Grade
50%
67.2%
Medium to Slightly Thick
Long
EXCELLENT
EXCELLENT
NONE
IGI LG754508000
Comments: As Grown - No indication of post-growth treatment.
This Laboratory Grown Diamond was created by High Pressure High Temperature (HPHT) growth process.
Type II