



ELECTRONIC COPY

LG754527454
Report verification at igi.org



December 5, 2025

IGI Report Number **LG754527454**

Description **LABORATORY GROWN DIAMOND**

Shape and Cutting Style **OVAL BRILLIANT**

Measurements **10.38 X 7.38 X 4.41 MM**

GRADING RESULTS

Carat Weight **2.10 CARATS**

Color Grade **E**

Clarity Grade **VVS 1**

December 5, 2025
IGI Report Number **LG754527454**
Description **LABORATORY GROWN DIAMOND**
Shape and Cutting Style **OVAL BRILLIANT**
Measurements **10.38 X 7.38 X 4.41 MM**

GRADING RESULTS

Carat Weight **2.10 CARATS**

Color Grade **E**

Clarity Grade **VVS 1**

ADDITIONAL GRADING INFORMATION

Polish **EXCELLENT**

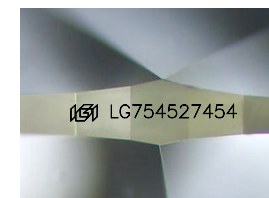
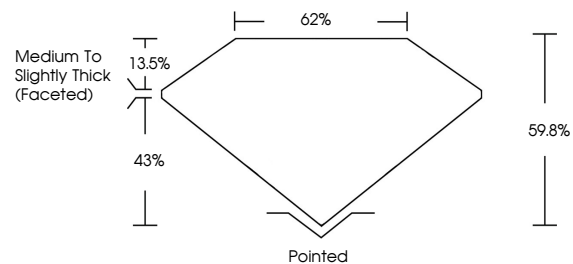
Symmetry **EXCELLENT**

Fluorescence **NONE**

Inscription(s) **IGI LG754527454**

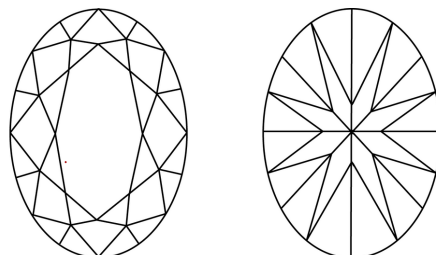
Comments: This Laboratory Grown Diamond was created by Chemical Vapor Deposition (CVD) growth process. Type IIa

PROPORTIONS



Sample Image Used

CLARITY CHARACTERISTICS



KEY TO SYMBOLS

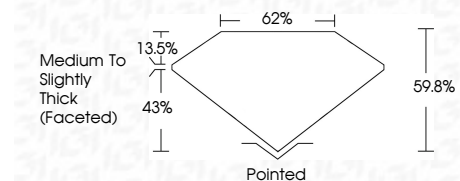
Red symbols indicate internal characteristics.
Green symbols indicate external characteristics.

COLOR

D E F G H I J Faint Very Light Light

CLARITY

| FL | IF | VVS ¹⁻² | VS ¹⁻² | SI ¹⁻² | I ¹⁻³ |
|----------|---------------------|-----------------------------|------------------------|-------------------|------------------|
| Flawless | Internally Flawless | Very Very Slightly Included | Very Slightly Included | Slightly Included | Included |



ADDITIONAL GRADING INFORMATION

Polish **EXCELLENT**

Symmetry **EXCELLENT**

Fluorescence **NONE**

Inscription(s) **IGI LG754527454**

Comments: This Laboratory Grown Diamond was created by Chemical Vapor Deposition (CVD) growth process. Type IIa



IGI



| | | | | | | | | | | | | |
|---------------------------|---------------------------|-------------|-------|-------|-----|-------|---------|-----------|-----------|-----------|-----------------|-----------------|
| December 5, 2025 | IGI Report No LG754527454 | 2.10 CARATS | E | VVS 1 | 62% | 43% | 59.8% | Pointed | EXCELLENT | EXCELLENT | NONE | IGI LG754527454 |
| IGI Report No LG754527454 | 2.10 CARATS | E | VVS 1 | 62% | 43% | 59.8% | Pointed | EXCELLENT | EXCELLENT | NONE | IGI LG754527454 | |
| 10.38 X 7.38 X 4.41 MM | 2.10 CARATS | E | VVS 1 | 62% | 43% | 59.8% | Pointed | EXCELLENT | EXCELLENT | NONE | IGI LG754527454 | |
| Color Grade | 2.10 CARATS | E | VVS 1 | 62% | 43% | 59.8% | Pointed | EXCELLENT | EXCELLENT | NONE | IGI LG754527454 | |
| Clarity Grade | 2.10 CARATS | E | VVS 1 | 62% | 43% | 59.8% | Pointed | EXCELLENT | EXCELLENT | NONE | IGI LG754527454 | |
| Depth | 2.10 CARATS | E | VVS 1 | 62% | 43% | 59.8% | Pointed | EXCELLENT | EXCELLENT | NONE | IGI LG754527454 | |
| Table | 2.10 CARATS | E | VVS 1 | 62% | 43% | 59.8% | Pointed | EXCELLENT | EXCELLENT | NONE | IGI LG754527454 | |
| Girdle | 2.10 CARATS | E | VVS 1 | 62% | 43% | 59.8% | Pointed | EXCELLENT | EXCELLENT | NONE | IGI LG754527454 | |
| Culet | 2.10 CARATS | E | VVS 1 | 62% | 43% | 59.8% | Pointed | EXCELLENT | EXCELLENT | NONE | IGI LG754527454 | |
| Polish | 2.10 CARATS | E | VVS 1 | 62% | 43% | 59.8% | Pointed | EXCELLENT | EXCELLENT | NONE | IGI LG754527454 | |
| Symmetry | 2.10 CARATS | E | VVS 1 | 62% | 43% | 59.8% | Pointed | EXCELLENT | EXCELLENT | NONE | IGI LG754527454 | |
| Fluorescence | 2.10 CARATS | E | VVS 1 | 62% | 43% | 59.8% | Pointed | EXCELLENT | EXCELLENT | NONE | IGI LG754527454 | |
| Inscription(s) | 2.10 CARATS | E | VVS 1 | 62% | 43% | 59.8% | Pointed | EXCELLENT | EXCELLENT | NONE | IGI LG754527454 | |

Comments: This Laboratory Grown Diamond was created by Chemical Vapor Deposition (CVD) growth process. Type IIa