



**ELECTRONIC COPY**

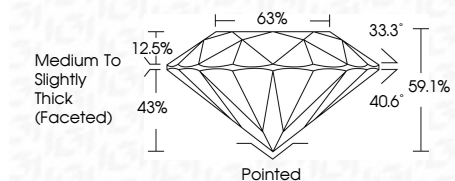
LG754536291  
Report verification at igi.org



January 12, 2026  
IGI Report Number **LG754536291**  
Description **LABORATORY GROWN DIAMOND**  
Shape and Cutting Style **ROUND BRILLIANT**  
Measurements **7.34 - 7.44 X 4.38 MM**

**GRADING RESULTS**

Carat Weight **1.50 CARAT**  
Color Grade **G**  
Clarity Grade **SI 1**  
Cut Grade **VERY GOOD**

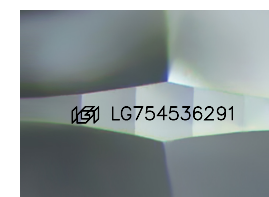


**ADDITIONAL GRADING INFORMATION**

Polish **EXCELLENT**  
Symmetry **GOOD**  
Fluorescence **NONE**  
Inscription(s) **IGI LG754536291**  
Comments: This Laboratory Grown Diamond was created by Chemical Vapor Deposition (CVD) growth process. Type IIa

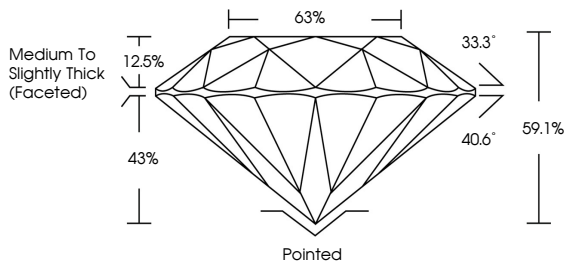


January 12, 2026  
IGI Report No LG754536291  
**ROUND BRILLIANT**  
7.34 - 7.44 X 4.38 MM  
1.50 CARAT  
Color Grade **G**  
Clarity Grade **SI 1**  
Cut Grade **VERY GOOD**  
Depth **61.1%**  
Table **63%**  
Girdle **Medium To Slightly Thick (Faceted)**  
Culet **Pointed**  
Polish **EXCELLENT**  
Symmetry **GOOD**  
Fluorescence **NONE**  
Inscription(s) **IGI LG754536291**  
Comments: This Laboratory Grown Diamond was created by Chemical Vapor Deposition (CVD) growth process. Type IIa

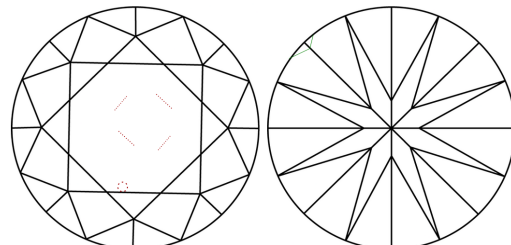


Sample Image Used

**PROPORTIONS**



**CLARITY CHARACTERISTICS**



**KEY TO SYMBOLS**

Red symbols indicate internal characteristics.  
Green symbols indicate external characteristics.

**COLOR**

D	E	F	G	H	I	J	Faint	Very Light	Light
---	---	---	---	---	---	---	-------	------------	-------

**CLARITY**

FL	IF	VS <sup>1-2</sup>	VS <sup>1-2</sup>	SI <sup>1-2</sup>	I <sup>1-3</sup>
Flawless	Internally Flawless	Very Very Slightly Included	Very Slightly Included	Slightly Included	Included

