



**ELECTRONIC COPY**

LG754567344  
Report verification at igi.org



December 18, 2025

IGI Report Number **LG754567344**

Description **LABORATORY GROWN DIAMOND**

Shape and Cutting Style **PEAR BRILLIANT**

Measurements **10.10 X 6.30 X 4.30 MM**

**GRADING RESULTS**

Carat Weight **1.61 CARAT**

Color Grade **E**

Clarity Grade **VVS 2**

December 18, 2025  
IGI Report Number **LG754567344**  
Description **LABORATORY GROWN DIAMOND**  
Shape and Cutting Style **PEAR BRILLIANT**  
Measurements **10.10 X 6.30 X 4.30 MM**

**GRADING RESULTS**

Carat Weight **1.61 CARAT**

Color Grade **E**

Clarity Grade **VVS 2**

**ADDITIONAL GRADING INFORMATION**

Polish **VERY GOOD**

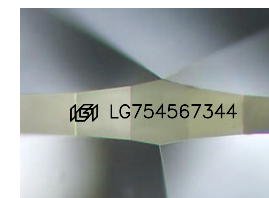
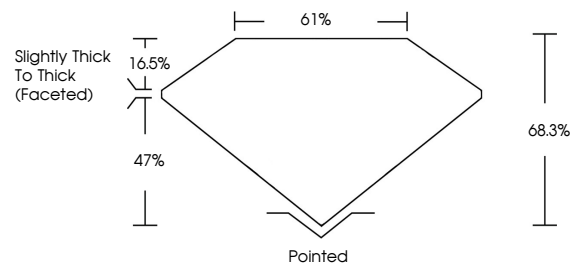
Symmetry **GOOD**

Fluorescence **NONE**

Inscription(s) **IGI LG754567344**

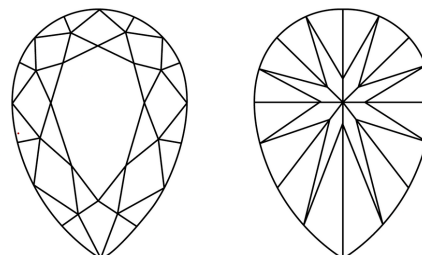
Comments: This Laboratory Grown Diamond was created by Chemical Vapor Deposition (CVD) growth process.  
Type IIa

**PROPORTIONS**



Sample Image Used

**CLARITY CHARACTERISTICS**



**KEY TO SYMBOLS**

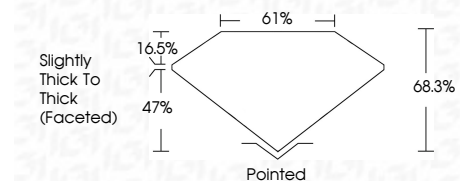
Red symbols indicate internal characteristics.  
Green symbols indicate external characteristics.

**COLOR**

D E F G H I J Faint Very Light Light

**CLARITY**

FL	IF	VVS <sup>1-2</sup>	VS <sup>1-2</sup>	SI <sup>1-2</sup>	I <sup>1-3</sup>
Flawless	Internally Flawless	Very Very Slightly Included	Very Slightly Included	Slightly Included	Included



**ADDITIONAL GRADING INFORMATION**

Polish **VERY GOOD**

Symmetry **GOOD**

Fluorescence **NONE**

Inscription(s) **IGI LG754567344**

Comments: This Laboratory Grown Diamond was created by Chemical Vapor Deposition (CVD) growth process.  
Type IIa



**IGI**



December 18, 2025  
IGI Report No LG754567344  
**PEAR BRILLIANT**  
10.10 X 6.30 X 4.30 MM  
1.61 CARAT  
E  
VVS 2  
68.3%  
47%  
61%  
Slightly Thick To Thick (Faceted)  
Pointed  
VERY GOOD  
GOOD  
NONE  
IGI LG754567344  
Inscription(s)  
Comments: This Laboratory Grown Diamond was created by Chemical Vapor Deposition (CVD) growth process.  
Type IIa