



ELECTRONIC COPY

LG754568415
Report verification at igi.org



January 5, 2026

IGI Report Number **LG754568415**

Description **LABORATORY GROWN DIAMOND**

Shape and Cutting Style **ROUND BRILLIANT**

Measurements **7.96 - 8.00 X 4.79 MM**

GRADING RESULTS

Carat Weight **1.88 CARAT**

Color Grade **E**

Clarity Grade **VVS 1**

Cut Grade **IDEAL**

January 5, 2026
IGI Report Number **LG754568415**
Description **LABORATORY GROWN DIAMOND**
Shape and Cutting Style **ROUND BRILLIANT**
Measurements **7.96 - 8.00 X 4.79 MM**

GRADING RESULTS

Carat Weight **1.88 CARAT**

Color Grade **E**

Clarity Grade **VVS 1**

Cut Grade **IDEAL**

ADDITIONAL GRADING INFORMATION

Polish **EXCELLENT**

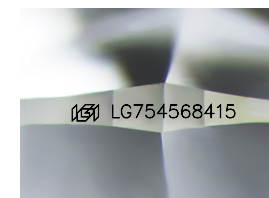
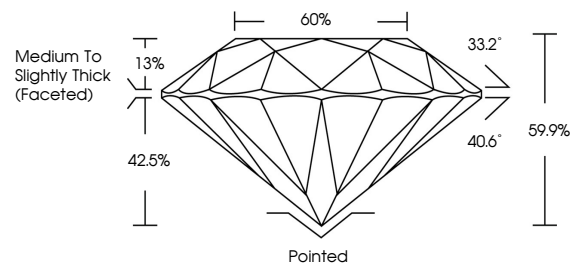
Symmetry **EXCELLENT**

Fluorescence **NONE**

Inscription(s) **LG754568415**

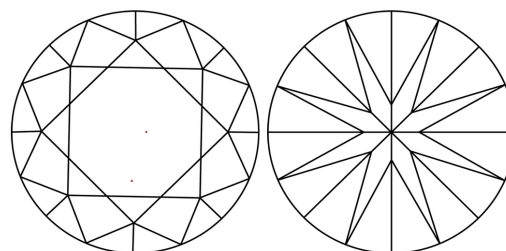
Comments: This Laboratory Grown Diamond was created by Chemical Vapor Deposition (CVD) growth process.
Type IIa

PROPORTIONS



Sample Image Used

CLARITY CHARACTERISTICS



KEY TO SYMBOLS

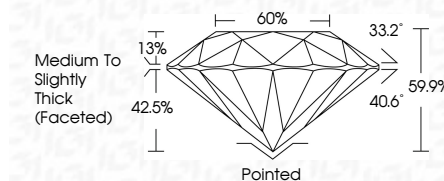
Red symbols indicate internal characteristics.
Green symbols indicate external characteristics.

COLOR

D E F G H I J Faint Very Light Light

CLARITY

FL	IF	VVS ¹⁻²	VS ¹⁻²	SI ¹⁻²	I ¹⁻³
Flawless	Internally Flawless	Very Very Slightly Included	Very Slightly Included	Slightly Included	Included



ADDITIONAL GRADING INFORMATION

Polish **EXCELLENT**

Symmetry **EXCELLENT**

Fluorescence **NONE**

Inscription(s) **LG754568415**

Comments: This Laboratory Grown Diamond was created by Chemical Vapor Deposition (CVD) growth process.
Type IIa



IGI



January 5, 2026	IGI Report No LG754568415	1.88 CARAT	E
ROUND BRILLIANT	7.96 - 8.00 X 4.79 MM	VVS 1	IDEAL
Carat Weight	Color Grade	Clarity Grade	Depth
1.88 CARAT	E	VVS 1	59.9%
		60%	Medium To Slightly Thick (Faceted)
Cut Grade	Polish	Symmetry	Fluorescence
IDEAL	EXCELLENT	EXCELLENT	NONE
			Inscription(s)
			LG754568415
			Comments: This Laboratory Grown Diamond was created by Chemical Vapor Deposition (CVD) growth process. Type IIa