



INTERNATIONAL GEMOLOGICAL INSTITUTE

ELECTRONIC COPY

LABORATORY GROWN DIAMOND REPORT

December 11, 2025

IGI Report Number

LG754571844

Description

LABORATORY GROWN DIAMOND

Shape and Cutting Style

ROUND BRILLIANT

Measurements

5.20 - 5.22 X 3.14 MM

GRADING RESULTS

Carat Weight

0.52 CARAT

Color Grade

I

Clarity Grade

VVS 2

Cut Grade

IDEAL

ADDITIONAL GRADING INFORMATION

Polish

VERY GOOD

Symmetry

VERY GOOD

Fluorescence

NONE

Inscription(s)

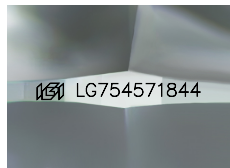
IGI LG754571844

Comments: As Grown - No indication of post-growth treatment.

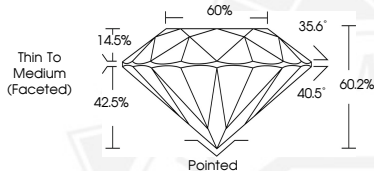
This Laboratory Grown Diamond was created by High Pressure High Temperature (HPHT) growth process.

Type II

Light Blue



Sample Image Used



December 11, 2025

IGI Report Number LG754571844

ROUND BRILLIANT

LABORATORY GROWN DIAMOND

5.20 - 5.22 X 3.14 MM

Carat Weight 0.52 CARAT

Color Grade I

Clarity Grade VVS 2

Cut Grade IDEAL

Polish VERY GOOD

Symmetry VERY GOOD

Fluorescence NONE

Inscription(s) IGI LG754571844

Comments: As Grown - No indication of post-growth treatment. This Laboratory Grown Diamond was created by High Pressure High Temperature (HPHT) growth process. Type II Light Blue



December 11, 2025

IGI Report Number LG754571844

ROUND BRILLIANT

LABORATORY GROWN DIAMOND

5.20 - 5.22 X 3.14 MM

Carat Weight 0.52 CARAT

Color Grade I

Clarity Grade VVS 2

Cut Grade IDEAL

Polish VERY GOOD

Symmetry VERY GOOD

Fluorescence NONE

Inscription(s) IGI LG754571844

Comments: As Grown - No indication of post-growth treatment. This Laboratory Grown Diamond was created by High Pressure High Temperature (HPHT) growth process. Type II Light Blue



THIS DOCUMENT WAS PRODUCED WITH THE FOLLOWING SECURITY MEASURES: SPECIAL DOCUMENT PAPER, INK SCREENS, WATERMARK, BACKGROUND DESIGNS, HOLOGRAM AND OTHER SECURITY FEATURES NOT LISTED AND DO EXCEED DOCUMENT SECURITY INDUSTRY GUIDELINES.

For terms & conditions and to verify this report, please visit www.igi.org