



INTERNATIONAL GEMOLOGICAL INSTITUTE

ELECTRONIC COPY

LABORATORY GROWN DIAMOND REPORT

December 11, 2025

IGI Report Number

LG754571880

Description

LABORATORY GROWN DIAMOND

Shape and Cutting Style

MODIFIED PEAR STEP CUT

Measurements

5.87 X 3.81 X 2.22 MM

GRADING RESULTS

Carat Weight

0.33 CARAT

Color Grade

E

Clarity Grade

VVS 2

ADDITIONAL GRADING INFORMATION

Polish

VERY GOOD

Symmetry

FAIR

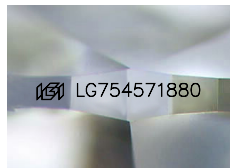
Fluorescence

NONE

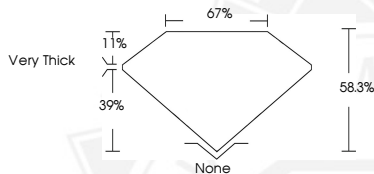
Inscription(s)

IGI LG754571880

Comments: This Laboratory Grown Diamond was created by Chemical Vapor Deposition (CVD) growth process. Type IIa



Sample Image Used



December 11, 2025

IGI Report Number LG754571880

MODIFIED PEAR STEP CUT

LABORATORY GROWN DIAMOND

5.87 X 3.81 X 2.22 MM

Carat Weight 0.33 CARAT

Color Grade E

Clarity Grade VVS 2

Polish VERY GOOD

Symmetry FAIR

Fluorescence NONE

Inscription(s) IGI LG754571880

Comments: This Laboratory Grown Diamond was created by Chemical Vapor Deposition (CVD) growth process. Type IIa



December 11, 2025

IGI Report Number LG754571880

MODIFIED PEAR STEP CUT

LABORATORY GROWN DIAMOND

5.87 X 3.81 X 2.22 MM

Carat Weight 0.33 CARAT

Color Grade E

Clarity Grade VVS 2

Polish VERY GOOD

Symmetry FAIR

Fluorescence NONE

Inscription(s) IGI LG754571880

Comments: This Laboratory Grown Diamond was created by Chemical Vapor Deposition (CVD) growth process. Type IIa



THIS DOCUMENT WAS PRODUCED WITH THE FOLLOWING SECURITY MEASURES: SPECIAL DOCUMENT PAPER, INK SCREENS, WATERMARK, BACKGROUND DESIGNS, HOLOGRAM AND OTHER SECURITY FEATURES NOT LISTED AND DO EXCEED DOCUMENT SECURITY INDUSTRY GUIDELINES.

For terms & conditions and to verify this report, please visit www.igi.org