



ELECTRONIC COPY

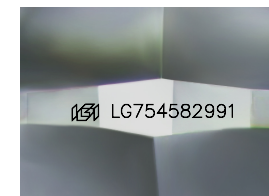
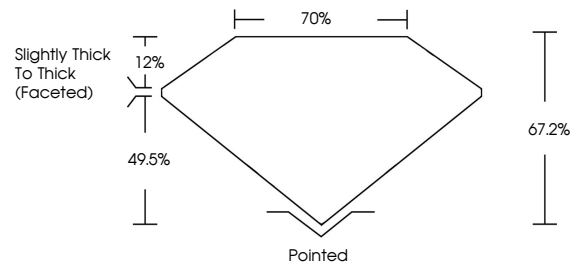
LG754582991
Report verification at igi.org



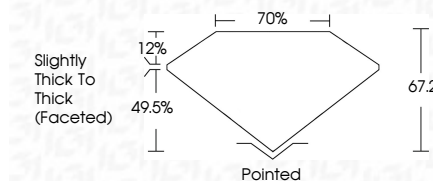
December 8, 2025
IGI Report Number **LG754582991**
Description **LABORATORY GROWN DIAMOND**
Shape and Cutting Style **SQUARE CUSHION MODIFIED BRILLIANT**
Measurements **7.57 X 7.54 X 5.07 MM**
GRADING RESULTS
Carat Weight **2.69 CARATS**
Color Grade **FANCY VIVID BLUE**
Clarity Grade **VVS 2**

December 8, 2025
IGI Report Number **LG754582991**
Description **LABORATORY GROWN DIAMOND**
Shape and Cutting Style **SQUARE CUSHION MODIFIED BRILLIANT**
Measurements **7.57 X 7.54 X 5.07 MM**
GRADING RESULTS
Carat Weight **2.69 CARATS**
Color Grade **FANCY VIVID BLUE**
Clarity Grade **VVS 2**

PROPORTIONS



Sample Image Used



ADDITIONAL GRADING INFORMATION

Polish **EXCELLENT**
Symmetry **EXCELLENT**
Fluorescence **NONE**
Inscription(s) **IGI LG754582991**

Comments: This Laboratory Grown Diamond was created by Chemical Vapor Deposition (CVD) growth process.
Indications of post-growth treatment.

ADDITIONAL GRADING INFORMATION

Polish **EXCELLENT**
Symmetry **EXCELLENT**
Fluorescence **NONE**
Inscription(s) **IGI LG754582991**
Comments: This Laboratory Grown Diamond was created by Chemical Vapor Deposition (CVD) growth process.
Indications of post-growth treatment.

COLOR

D E F G H I J Faint Very Light Light

CLARITY

| FL | IF | VVS ¹⁻² | VS ¹⁻² | SI ¹⁻² | I ¹⁻³ |
|----------|---------------------|-----------------------------|------------------------|-------------------|------------------|
| Flawless | Internally Flawless | Very Very Slightly Included | Very Slightly Included | Slightly Included | Included |



December 8, 2025
IGI Report No **LG754582991**
SQUARE CUSHION MODIFIED BRILLIANT
2.69 CARATS
Carat Weight **FANCY VIVID BLUE**
Color Grade **VVS 2**
Depth **67.2%**
Table **70%**
Girdle **Slightly Thick To Thick (Faceted)**
Culet **Pointed**
Polish **EXCELLENT**
Symmetry **EXCELLENT**
Fluorescence **NONE**
Inscription(s) **IGI LG754582991**
Comments: This Laboratory Grown Diamond was created by Chemical Vapor Deposition (CVD) growth process.
Indications of post-growth treatment.