



# INTERNATIONAL GEMOLOGICAL INSTITUTE

ELECTRONIC COPY

## LABORATORY GROWN DIAMOND REPORT

January 19, 2026  
IGI Report Number **LG754586613**  
Description **LABORATORY GROWN DIAMOND**  
Shape and Cutting Style **ROUND BRILLIANT**  
Measurements **4.30 - 4.34 X 2.83 MM**

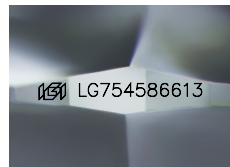
### GRADING RESULTS

Carat Weight **0.33 CARAT**  
Color Grade **E**  
Clarity Grade **VVS 2**  
Cut Grade **GOOD**

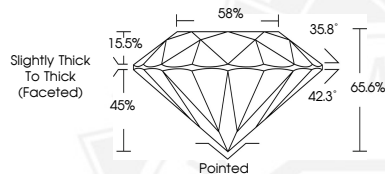
### ADDITIONAL GRADING INFORMATION

Polish **VERY GOOD**  
Symmetry **VERY GOOD**  
Fluorescence **NONE**  
Inscription(s) **IGI LG754586613**

Comments: This Laboratory Grown Diamond was created by Chemical Vapor Deposition (CVD) growth process. Type IIa



Sample Image Used



January 19, 2026  
IGI Report Number **LG754586613**  
**ROUND BRILLIANT**  
**LABORATORY GROWN DIAMOND**  
**4.30 - 4.34 X 2.83 MM**  
Carat Weight **0.33 CARAT**  
Color Grade **E**  
Clarity Grade **VVS 2**  
Cut Grade **GOOD**  
Polish **VERY GOOD**  
Symmetry **VERY GOOD**  
Fluorescence **NONE**  
Inscription(s) **IGI LG754586613**  
Comments: This Laboratory Grown Diamond was created by Chemical Vapor Deposition (CVD) growth process. Type IIa



January 19, 2026  
IGI Report Number **LG754586613**  
**ROUND BRILLIANT**  
**LABORATORY GROWN DIAMOND**  
**4.30 - 4.34 X 2.83 MM**  
Carat Weight **0.33 CARAT**  
Color Grade **E**  
Clarity Grade **VVS 2**  
Cut Grade **GOOD**  
Polish **VERY GOOD**  
Symmetry **VERY GOOD**  
Fluorescence **NONE**  
Inscription(s) **IGI LG754586613**  
Comments: This Laboratory Grown Diamond was created by Chemical Vapor Deposition (CVD) growth process. Type IIa



THIS DOCUMENT WAS PRODUCED WITH THE FOLLOWING SECURITY MEASURES: SPECIAL DOCUMENT PAPER, INK SCREENS, WATERMARK, BACKGROUND DESIGNS, HOLOGRAM AND OTHER SECURITY FEATURES NOT LISTED AND DO EXCEED DOCUMENT SECURITY INDUSTRY GUIDELINES.

For terms & conditions and to verify this report, please visit [www.igi.org](http://www.igi.org)