



# INTERNATIONAL GEMOLOGICAL INSTITUTE

ELECTRONIC COPY

## LABORATORY GROWN DIAMOND REPORT

January 19, 2026

IGI Report Number

LG754586645

Description

LABORATORY GROWN DIAMOND

Shape and Cutting Style

ROUND BRILLIANT

Measurements

4.25 - 4.27 X 2.68 MM

### GRADING RESULTS

Carat Weight

0.30 CARAT

Color Grade

E

Clarity Grade

VVS 2

Cut Grade

VERY GOOD

### ADDITIONAL GRADING INFORMATION

Polish

GOOD

Symmetry

GOOD

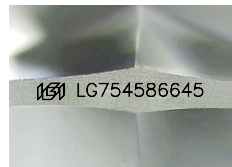
Fluorescence

NONE

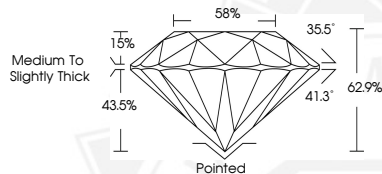
Inscription(s)

IGI LG754586645

Comments: This Laboratory Grown Diamond was created by Chemical Vapor Deposition (CVD) growth process. Type IIa



Sample Image Used



January 19, 2026

IGI Report Number LG754586645

ROUND BRILLIANT

LABORATORY GROWN DIAMOND

4.25 - 4.27 X 2.68 MM

Carat Weight 0.30 CARAT

Color Grade E

Clarity Grade VVS 2

Cut Grade VERY GOOD

Polish GOOD

Symmetry GOOD

Fluorescence NONE

Inscription(s) IGI LG754586645

Comments: This Laboratory Grown Diamond was created by Chemical Vapor Deposition (CVD) growth process. Type IIa



January 19, 2026

IGI Report Number LG754586645

ROUND BRILLIANT

LABORATORY GROWN DIAMOND

4.25 - 4.27 X 2.68 MM

Carat Weight 0.30 CARAT

Color Grade E

Clarity Grade VVS 2

Cut Grade VERY GOOD

Polish GOOD

Symmetry GOOD

Fluorescence NONE

Inscription(s) IGI LG754586645

Comments: This Laboratory Grown Diamond was created by Chemical Vapor Deposition (CVD) growth process. Type IIa



THIS DOCUMENT WAS PRODUCED WITH THE FOLLOWING SECURITY MEASURES: SPECIAL DOCUMENT PAPER, INK SCREENS, WATERMARK, BACKGROUND DESIGNS, HOLOGRAM AND OTHER SECURITY FEATURES NOT LISTED AND DO EXCEED DOCUMENT SECURITY INDUSTRY GUIDELINES.

For terms & conditions and to verify this report, please visit [www.igi.org](http://www.igi.org)