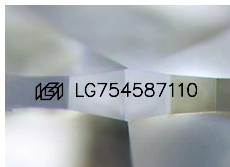




January 29, 2026
IGI Report Number **LG754587110**
OVAL BRILLIANT
LABORATORY GROWN DIAMOND
6.84 X 4.87 X 2.95 MM
Carat Weight **0.61 CARAT**
Color Grade **E**
Clarity Grade **VS 1**
Polish **EXCELLENT**
Symmetry **VERY GOOD**
Fluorescence **NONE**
Inscription(s) **IGI LG754587110**

LABORATORY GROWN DIAMOND REPORT

January 29, 2026
IGI Report Number **LG754587110**
Description **LABORATORY GROWN DIAMOND**
Shape and Cutting Style **OVAL BRILLIANT**
Measurements **6.84 X 4.87 X 2.95 MM**



Sample Image Used

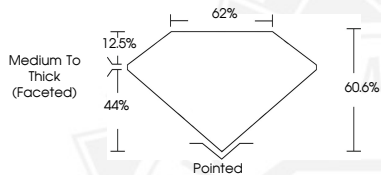
GRADING RESULTS

Carat Weight **0.61 CARAT**
Color Grade **E**
Clarity Grade **VS 1**

ADDITIONAL GRADING INFORMATION

Polish **EXCELLENT**
Symmetry **VERY GOOD**
Fluorescence **NONE**
Inscription(s) **IGI LG754587110**

Comments: This Laboratory Grown Diamond was created by Chemical Vapor Deposition (CVD) growth process. Type IIa



January 29, 2026
IGI Report Number **LG754587110**
OVAL BRILLIANT
LABORATORY GROWN DIAMOND
6.84 X 4.87 X 2.95 MM
Carat Weight **0.61 CARAT**
Color Grade **E**
Clarity Grade **VS 1**
Polish **EXCELLENT**
Symmetry **VERY GOOD**
Fluorescence **NONE**
Inscription(s) **IGI LG754587110**

Comments: This Laboratory Grown Diamond was created by Chemical Vapor Deposition (CVD) growth process. Type IIa



THIS DOCUMENT WAS PRODUCED WITH THE FOLLOWING SECURITY MEASURES: SPECIAL DOCUMENT PAPER, INK SCREENS, WATERMARK, BACKGROUND DESIGNS, HOLOGRAM AND OTHER SECURITY FEATURES NOT LISTED AND DO EXCEED DOCUMENT SECURITY INDUSTRY GUIDELINES.