



February 2, 2026

IGI Report Number **LG754588371**

PEAR BRILLIANT

LABORATORY GROWN DIAMOND

7.94 X 4.99 X 3.14 MM

Carat Weight **0.73 CARAT**

Color Grade **F**

Clarity Grade **VS 2**

Polish **VERY GOOD**

Symmetry **VERY GOOD**

Fluorescence **NONE**

Inscription(s) **IGI LG754588371**

Comments: This Laboratory Grown Diamond was created by Chemical Vapor Deposition (CVD) growth process. Type IIa

LABORATORY GROWN DIAMOND REPORT

February 2, 2026

IGI Report Number

LG754588371

Description

LABORATORY GROWN DIAMOND

Shape and Cutting Style

PEAR BRILLIANT

Measurements

7.94 X 4.99 X 3.14 MM

GRADING RESULTS

Carat Weight

0.73 CARAT

Color Grade

F

Clarity Grade

VS 2

ADDITIONAL GRADING INFORMATION

Polish

VERY GOOD

Symmetry

VERY GOOD

Fluorescence

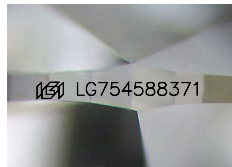
NONE

Inscription(s)

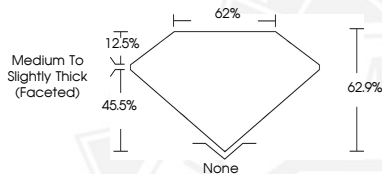
IGI LG754588371

Comments: This Laboratory Grown Diamond was created by Chemical Vapor Deposition (CVD) growth process.

Type IIa



Sample Image Used



February 2, 2026

IGI Report Number **LG754588371**

PEAR BRILLIANT

LABORATORY GROWN DIAMOND

7.94 X 4.99 X 3.14 MM

Carat Weight **0.73 CARAT**

Color Grade **F**

Clarity Grade **VS 2**

Polish **VERY GOOD**

Symmetry **VERY GOOD**

Fluorescence **NONE**

Inscription(s) **IGI LG754588371**

Comments: This Laboratory Grown Diamond was created by Chemical Vapor Deposition (CVD) growth process. Type IIa



THIS DOCUMENT WAS PRODUCED WITH THE FOLLOWING SECURITY MEASURES: SPECIAL DOCUMENT PAPER, INK SCREENS, WATERMARK, BACKGROUND DESIGNS, HOLOGRAM AND OTHER SECURITY FEATURES NOT LISTED AND DO EXCEED DOCUMENT SECURITY INDUSTRY GUIDELINES.