



February 2, 2026

IGI Report Number LG754588855
RECTANGULAR PRINCESS CUT
LABORATORY GROWN DIAMOND
4.99 X 4.50 X 3.67 MM

Carat Weight **0.71 CARAT**
Color Grade **D**
Clarity Grade **VS 2**
Polish **VERY GOOD**
Symmetry **VERY GOOD**
Fluorescence **NONE**
Inscription(s) **IGI LG754588855**

Comments: As Grown - No indication of post-growth treatment. This Laboratory Grown Diamond was created by High Pressure High Temperature (HPHT) growth process. Type II

LABORATORY GROWN DIAMOND REPORT

February 2, 2026
IGI Report Number **LG754588855**
Description **LABORATORY GROWN DIAMOND**
Shape and Cutting Style **RECTANGULAR PRINCESS CUT**
Measurements **4.99 X 4.50 X 3.67 MM**

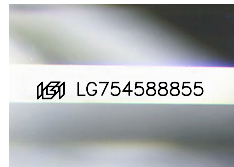
GRADING RESULTS

Carat Weight **0.71 CARAT**
Color Grade **D**
Clarity Grade **VS 2**

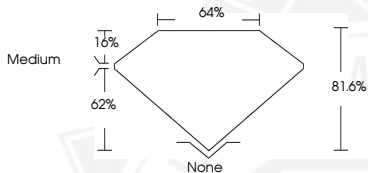
ADDITIONAL GRADING INFORMATION

Polish **VERY GOOD**
Symmetry **VERY GOOD**
Fluorescence **NONE**
Inscription(s) **IGI LG754588855**

Comments: As Grown - No indication of post-growth treatment. This Laboratory Grown Diamond was created by High Pressure High Temperature (HPHT) growth process. Type II



Sample Image Used



February 2, 2026

IGI Report Number LG754588855
RECTANGULAR PRINCESS CUT
LABORATORY GROWN DIAMOND
4.99 X 4.50 X 3.67 MM

Carat Weight **0.71 CARAT**
Color Grade **D**
Clarity Grade **VS 2**
Polish **VERY GOOD**
Symmetry **VERY GOOD**
Fluorescence **NONE**
Inscription(s) **IGI LG754588855**

Comments: As Grown - No indication of post-growth treatment. This Laboratory Grown Diamond was created by High Pressure High Temperature (HPHT) growth process. Type II



THIS DOCUMENT WAS PRODUCED WITH THE FOLLOWING SECURITY MEASURES: SPECIAL DOCUMENT PAPER, INK SCREENS, WATERMARK, BACKGROUND DESIGNS, HOLOGRAM AND OTHER SECURITY FEATURES NOT LISTED AND DO EXCEED DOCUMENT SECURITY INDUSTRY GUIDELINES.