



January 6, 2026

IGI Report Number **LG754589677**

**PEAR BRILLIANT**

**LABORATORY GROWN DIAMOND**

**5.82 X 3.78 X 2.22 MM**

Carat Weight **0.30 CARAT**

Color Grade **D**

Clarity Grade **VS 1**

Polish **EXCELLENT**

Symmetry **VERY GOOD**

Fluorescence **NONE**

Inscription(s) **IGI LG754589677**

Comments: This Laboratory Grown Diamond was created by Chemical Vapor Deposition (CVD) growth process. Type IIa

**LABORATORY GROWN DIAMOND REPORT**

January 6, 2026

IGI Report Number

**LG754589677**

Description

**LABORATORY GROWN DIAMOND**

Shape and Cutting Style

**PEAR BRILLIANT**

Measurements

**5.82 X 3.78 X 2.22 MM**

**GRADING RESULTS**

Carat Weight

**0.30 CARAT**

Color Grade

**D**

Clarity Grade

**VS 1**

**ADDITIONAL GRADING INFORMATION**

Polish

**EXCELLENT**

Symmetry

**VERY GOOD**

Fluorescence

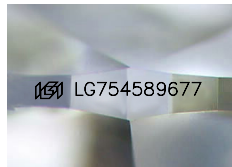
**NONE**

Inscription(s)

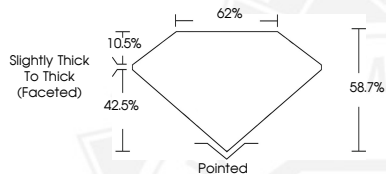
**IGI LG754589677**

Comments: This Laboratory Grown Diamond was created by Chemical Vapor Deposition (CVD) growth process.

Type IIa



Sample Image Used



January 6, 2026

IGI Report Number **LG754589677**

**PEAR BRILLIANT**

**LABORATORY GROWN DIAMOND**

**5.82 X 3.78 X 2.22 MM**

Carat Weight **0.30 CARAT**

Color Grade **D**

Clarity Grade **VS 1**

Polish **EXCELLENT**

Symmetry **VERY GOOD**

Fluorescence **NONE**

Inscription(s) **IGI LG754589677**

Comments: This Laboratory Grown Diamond was created by Chemical Vapor Deposition (CVD) growth process. Type IIa



THIS DOCUMENT WAS PRODUCED WITH THE FOLLOWING SECURITY MEASURES: SPECIAL DOCUMENT PAPER, INK SCREENS, WATERMARK BACKGROUND DESIGNS, HOLOGRAM AND OTHER SECURITY FEATURES NOT LISTED AND DO EXCEED DOCUMENT SECURITY INDUSTRY GUIDELINES.