



# INTERNATIONAL GEMOLOGICAL INSTITUTE

ELECTRONIC COPY

## LABORATORY GROWN DIAMOND REPORT

December 8, 2025  
IGI Report Number **LG754592602**  
Description **LABORATORY GROWN DIAMOND**  
Shape and Cutting Style **ROUND BRILLIANT**  
Measurements **5.11 - 5.14 X 3.17 MM**

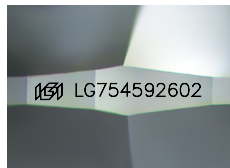
### GRADING RESULTS

Carat Weight **0.52 CARAT**  
Color Grade **F**  
Clarity Grade **VVS 1**  
Cut Grade **EXCELLENT**

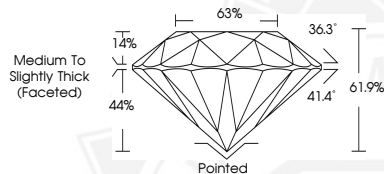
### ADDITIONAL GRADING INFORMATION

Polish **VERY GOOD**  
Symmetry **VERY GOOD**  
Fluorescence **NONE**  
Inscription(s) **IGI LG754592602**

Comments: This Laboratory Grown Diamond was created by  
Chemical Vapor Deposition (CVD) growth process.  
Type IIa



Sample Image Used



December 8, 2025

IGI Report Number **LG754592602**  
**ROUND BRILLIANT**  
**LABORATORY GROWN DIAMOND**  
**5.11 - 5.14 X 3.17 MM**

Carat Weight **0.52 CARAT**  
Color Grade **F**  
Clarity Grade **VVS 1**  
Cut Grade **EXCELLENT**  
Polish **VERY GOOD**  
Symmetry **VERY GOOD**  
Fluorescence **NONE**  
Inscription(s) **IGI LG754592602**

Comments: This Laboratory Grown  
Diamond was created by  
Chemical Vapor Deposition (CVD)  
growth process. Type IIa



December 8, 2025

IGI Report Number **LG754592602**  
**ROUND BRILLIANT**  
**LABORATORY GROWN DIAMOND**  
**5.11 - 5.14 X 3.17 MM**

Carat Weight **0.52 CARAT**  
Color Grade **F**  
Clarity Grade **VVS 1**  
Cut Grade **EXCELLENT**  
Polish **VERY GOOD**  
Symmetry **VERY GOOD**  
Fluorescence **NONE**  
Inscription(s) **IGI LG754592602**

Comments: This Laboratory Grown  
Diamond was created by  
Chemical Vapor Deposition (CVD)  
growth process. Type IIa



THIS DOCUMENT WAS PRODUCED WITH THE FOLLOWING SECURITY MEASURES: SPECIAL DOCUMENT PAPER, INK SCREENS, WATERMARK, BACKGROUND DESIGNS, HOLOGRAM AND OTHER SECURITY FEATURES NOT LISTED AND DO EXCEED DOCUMENT SECURITY INDUSTRY GUIDELINES.

For terms & conditions and to verify this report, please visit [www.igi.org](http://www.igi.org)