



ELECTRONIC COPY

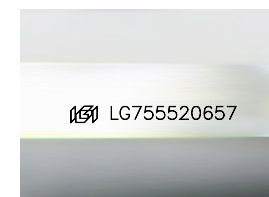
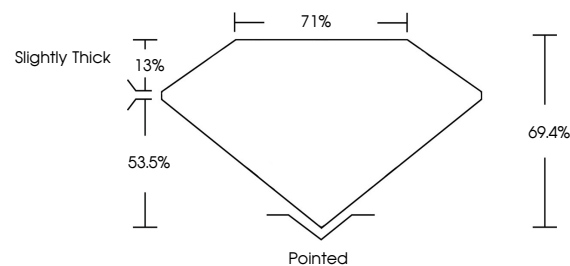
LG755520657
Report verification at igi.org



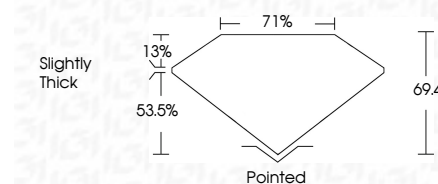
December 19, 2025
IGI Report Number **LG755520657**
Description **LABORATORY GROWN DIAMOND**
Shape and Cutting Style **PRINCESS CUT**
Measurements **13.83 X 13.51 X 9.38 MM**
GRADING RESULTS
Carat Weight **16.05 CARATS**
Color Grade **H**
Clarity Grade **VS 1**

December 19, 2025
IGI Report Number **LG755520657**
Description **LABORATORY GROWN DIAMOND**
Shape and Cutting Style **PRINCESS CUT**
Measurements **13.83 X 13.51 X 9.38 MM**
GRADING RESULTS
Carat Weight **16.05 CARATS**
Color Grade **H**
Clarity Grade **VS 1**

PROPORTIONS



Sample Image Used



ADDITIONAL GRADING INFORMATION

Polish **EXCELLENT**
Symmetry **EXCELLENT**
Fluorescence **NONE**
Inscription(s) **IGI LG755520657**

Comments: This Laboratory Grown Diamond was created by Chemical Vapor Deposition (CVD) growth process. Type IIa

ADDITIONAL GRADING INFORMATION

Polish **EXCELLENT**
Symmetry **EXCELLENT**
Fluorescence **NONE**
Inscription(s) **IGI LG755520657**
Comments: This Laboratory Grown Diamond was created by Chemical Vapor Deposition (CVD) growth process. Type IIa

COLOR

D E F G H I J Faint Very Light Light

CLARITY

FL	IF	VS ¹⁻²	VS ¹⁻²	SI ¹⁻²	I ¹⁻³
Flawless	Internally Flawless	Very Very Slightly Included	Very Slightly Included	Slightly Included	Included



IGI



December 19, 2025
IGI Report No **LG755520657**
PRINCESS CUT
16.05 CARATS
H
13.83 X 13.51 X 9.38 MM
Color Grade
Clarity Grade **VS 1**
Depth **69.4%**
Table **71%**
Girdle
Slightly Thick
Culet Pointed
Polish **EXCELLENT**
Symmetry **EXCELLENT**
Fluorescence **NONE**
Inscription(s) **IGI LG755520657**

Comments: This Laboratory Grown Diamond was created by Chemical Vapor Deposition (CVD) growth process. Type IIa