



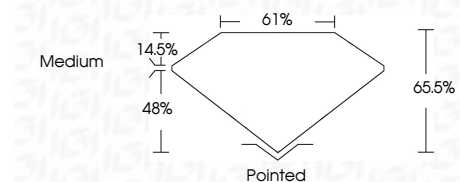
**ELECTRONIC COPY**

LG755521015  
Report verification at igi.org



December 8, 2025  
IGI Report Number **LG755521015**  
Description **LABORATORY GROWN DIAMOND**  
Shape and Cutting Style **SQUARE EMERALD CUT**  
Measurements **8.11 X 7.89 X 5.17 MM**

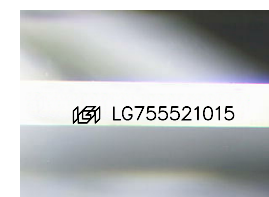
**GRADING RESULTS**  
Carat Weight **2.93 CARATS**  
Color Grade **E**  
Clarity Grade **VS 2**



**ADDITIONAL GRADING INFORMATION**  
Polish **EXCELLENT**  
Symmetry **EXCELLENT**  
Fluorescence **NONE**  
Inscription(s) **IGI LG755521015**  
Comments: This Laboratory Grown Diamond was created by Chemical Vapor Deposition (CVD) growth process. Type IIa

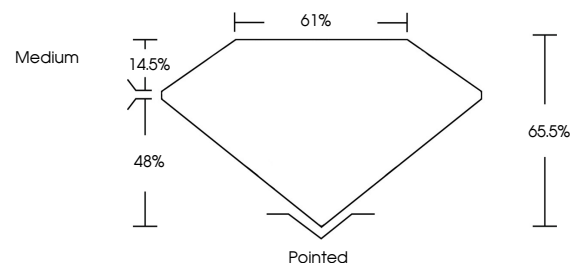


December 8, 2025  
IGI Report No LG755521015  
**SQUARE EMERALD CUT**  
8.11 X 7.89 X 5.17 MM  
2.93 CARATS  
E  
VS 2  
65.5%  
61%  
Medium  
Pointed  
EXCELLENT  
EXCELLENT  
NONE  
IGI LG755521015  
Comments: This Laboratory Grown Diamond was created by Chemical Vapor Deposition (CVD) growth process. Type IIa

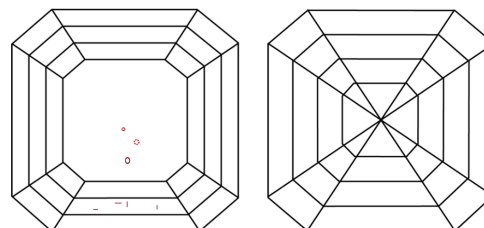


Sample Image Used

**PROPORTIONS**



**CLARITY CHARACTERISTICS**



**KEY TO SYMBOLS**

Red symbols indicate internal characteristics.  
Green symbols indicate external characteristics.

**COLOR**

D E F G H I J Faint Very Light Light

**CLARITY**

FL	IF	VS <sup>1-2</sup>	VS <sup>1-2</sup>	SI <sup>1-2</sup>	I <sup>1-3</sup>
Flawless	Internally Flawless	Very Very Slightly Included	Very Slightly Included	Slightly Included	Included

