



**ELECTRONIC COPY**

## LABORATORY GROWN DIAMOND REPORT

LG755524736  
Report verification at [igi.org](https://igi.org)

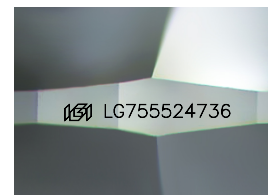
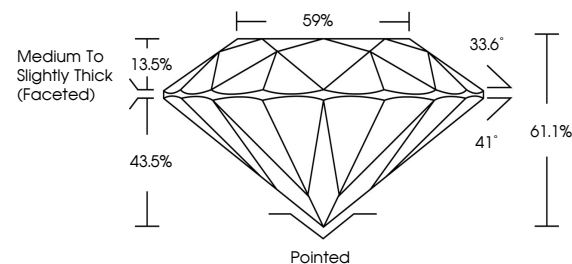
|                         |                          |
|-------------------------|--------------------------|
| December 17, 2025       |                          |
| IGI Report Number       | LG755524736              |
| Description             | LABORATORY GROWN DIAMOND |
| Shape and Cutting Style | ROUND BRILLIANT          |
| Measurements            | 6.90 - 6.94 X 4.23 MM    |
| GRADING RESULTS         |                          |
| Carat Weight            | 1.25 CARAT               |
| Color Grade             | E                        |
| Clarity Grade           | VVS 2                    |
| Cut Grade               | IDEAL                    |

### ADDITIONAL GRADING INFORMATION

|                |                 |
|----------------|-----------------|
| Polish         | EXCELLENT       |
| Symmetry       | EXCELLENT       |
| Fluorescence   | NONE            |
| Inscription(s) | 131 LG755524736 |

Comments: This Laboratory Grown Diamond was created by Chemical Vapor Deposition (CVD) growth process.  
Type IIa

## PROPORTIONS



Sample Image Used

## COLOR

D E F G H I J Faint Very Light Light

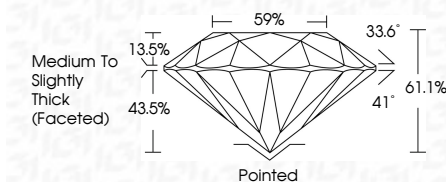
## CLARITY

| FL       | IF                  | VVS <sup>1-2</sup>          | VS <sup>1-2</sup>      | SI <sup>1-2</sup> | I <sup>1-3</sup> |
|----------|---------------------|-----------------------------|------------------------|-------------------|------------------|
| Flawless | Internally Flawless | Very Very Slightly Included | Very Slightly Included | Slightly Included | Included         |

## LABORATORY GROWN DIAMOND REPORT



|                         |                          |
|-------------------------|--------------------------|
| December 17, 2025       |                          |
| IGI Report Number       | LG755524736              |
| Description             | LABORATORY GROWN DIAMOND |
| Shape and Cutting Style | ROUND BRILLIANT          |
| Measurements            | 6.90 - 6.94 X 4.23 MM    |
| GRADING RESULTS         |                          |
| Carat Weight            | 1.25 CARAT               |
| Color Grade             | E                        |
| Clarity Grade           | VVS 2                    |
| Cut Grade               | IDEAL                    |



### ADDITIONAL GRADING INFORMATION

|   |   |
|---|---|
| Polish  | EXCELLENT   |
| Symmetry  | EXCELLENT   |
| Fluorescence  | NONE  |
| Inscription(s)  |  LG755524736 |
| <p>Comments: This Laboratory Grown Diamond was created by Chemical Vapor Deposition (CVD) growth process.</p> <p>Type IIa</p> |   |



© IGI 2020, International Gemological Institute

FD - 10 20



THIS DOCUMENT WAS PRODUCED WITH THE FOLLOWING SECURITY MEASURES: SPECIAL DOCUMENT PAPER, INK SCREENS, WATERMARK, BACKGROUND DESIGNS, HOLOGRAM AND OTHER SECURITY FEATURES NOT LISTED AND DO EXCEED DOCUMENT SECURITY INDUSTRY GUIDELINES

**www.igi.org**

December 17, 2025  
IGI Report No LG755524736  
ROUND BRILLIANT

|                 |                       |              |               |                                  |            |
|-----------------|-----------------------|--------------|---------------|----------------------------------|------------|
| ROUND BRILLIANT | 6.90 - 6.94 X 4.23 MM | Color Grade  | Clarity Grade | VVS 2                            | 1.26 CARAT |
|                 |                       | Cut Grade    | Cut Grade     | IDEAL                            |            |
|                 |                       | Depth        | Depth         | 61.1%                            |            |
|                 |                       | Table        | Table         | 59%                              |            |
|                 |                       | Grade        | Grade         | Medium to Slightly Thick Faceted |            |
|                 |                       | Quilt        | Quilt         | Pointed                          |            |
|                 |                       | Polish       | Symmetry      | EXCELLENT                        |            |
|                 |                       | Fluorescence | Fluorescence  | EXCELLENT                        |            |
|                 |                       |              |               | NONE                             |            |
|                 |                       |              |               | 4641 (735529) (7354)             |            |

**Comments:**  
This Laboratory Grown Diamond was created by Chemical Vapor Deposition (CVD) growth process.