



ELECTRONIC COPY

LG755526985
Report verification at igi.org



December 17, 2025
IGI Report Number **LG755526985**
Description **LABORATORY GROWN DIAMOND**
Shape and Cutting Style **CUSHION MODIFIED BRILLIANT**
Measurements **13.18 X 9.50 X 6.20 MM**
GRADING RESULTS
Carat Weight **7.21 CARATS**
Color Grade **FANCY VIVID RED**
Clarity Grade **VS 1**

December 17, 2025
IGI Report Number **LG755526985**
Description **LABORATORY GROWN DIAMOND**
Shape and Cutting Style **CUSHION MODIFIED BRILLIANT**
Measurements **13.18 X 9.50 X 6.20 MM**

GRADING RESULTS

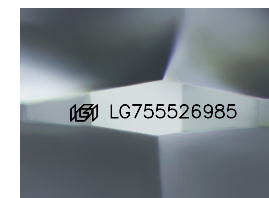
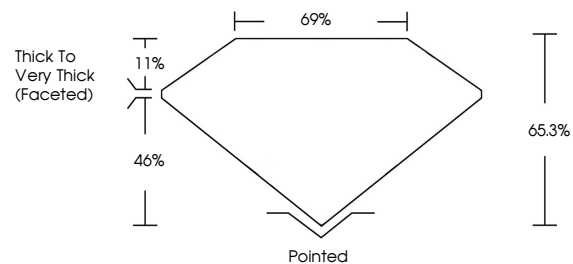
Carat Weight **7.21 CARATS**
Color Grade **FANCY VIVID RED**
Clarity Grade **VS 1**

ADDITIONAL GRADING INFORMATION

Polish **EXCELLENT**
Symmetry **VERY GOOD**
Fluorescence **SLIGHT**
Inscription(s) **IGI LG755526985**

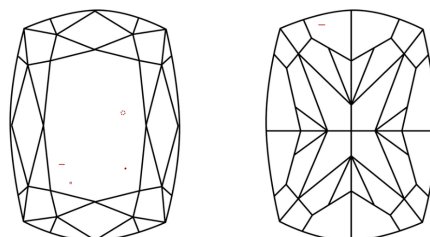
Comments: This Laboratory Grown Diamond was created by Chemical Vapor Deposition (CVD) growth process. Indications of post-growth treatment.

PROPORTIONS



Sample Image Used

CLARITY CHARACTERISTICS



KEY TO SYMBOLS

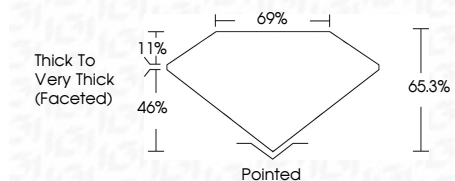
Red symbols indicate internal characteristics.
Green symbols indicate external characteristics.

COLOR

D E F G H I J Faint Very Light Light

CLARITY

FL	IF	VS ¹⁻²	VS ¹⁻²	SI ¹⁻²	I ¹⁻³
Flawless	Internally Flawless	Very Very Slightly Included	Very Slightly Included	Slightly Included	Included



ADDITIONAL GRADING INFORMATION

Polish **EXCELLENT**
Symmetry **VERY GOOD**
Fluorescence **SLIGHT**
Inscription(s) **IGI LG755526985**
Comments: This Laboratory Grown Diamond was created by Chemical Vapor Deposition (CVD) growth process. Indications of post-growth treatment.



December 17, 2025
IGI Report No **LG755526985**
CUSHION MODIFIED BRILLIANT
13.18 X 9.50 X 6.20 MM
Carat Weight **7.21 CARATS**
Color Grade **FANCY VIVID RED**
Clarity Grade **VS 1**
Depth **65.3%**
Table **69%**
Girdle **Thick to Very Thick (Faceted)**
Culet **Pointed**
Polish **EXCELLENT**
Symmetry **VERY GOOD**
Fluorescence **SLIGHT**
Inscription(s) **IGI LG755526985**
Comments: This Laboratory Grown Diamond was created by Chemical Vapor Deposition (CVD) growth process. Indications of post-growth treatment.