



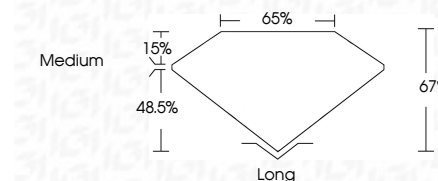
ELECTRONIC COPY

LG755528155
Report verification at igi.org



December 10, 2025
IGI Report Number LG755528155
Description LABORATORY GROWN DIAMOND
Shape and Cutting Style EMERALD CUT
Measurements 9.30 X 6.37 X 4.27 MM

GRADING RESULTS
Carat Weight 2.53 CARATS
Color Grade E
Clarity Grade VS 1



ADDITIONAL GRADING INFORMATION
Polish EXCELLENT
Symmetry EXCELLENT
Fluorescence NONE
Inscription(s) LG755528155
Comments: This Laboratory Grown Diamond was created by Chemical Vapor Deposition (CVD) growth process. Type IIa



December 10, 2025
IGI Report No LG755528155
EMERALD CUT
9.30 X 6.37 X 4.27 MM
2.53 CARATS
E
VS 1
67%
65%
Medium
Long
EXCELLENT
EXCELLENT
NONE
Inscription(s) LG755528155
Comments: This Laboratory Grown Diamond was created by Chemical Vapor Deposition (CVD) growth process. Type IIa

LABORATORY GROWN DIAMOND REPORT

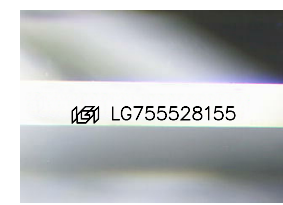
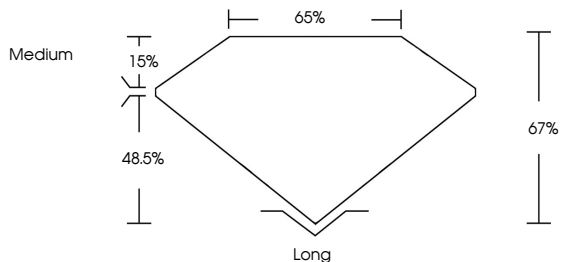
December 10, 2025
IGI Report Number LG755528155
Description LABORATORY GROWN DIAMOND
Shape and Cutting Style EMERALD CUT
Measurements 9.30 X 6.37 X 4.27 MM

GRADING RESULTS
Carat Weight 2.53 CARATS
Color Grade E
Clarity Grade VS 1

ADDITIONAL GRADING INFORMATION
Polish EXCELLENT
Symmetry EXCELLENT
Fluorescence NONE
Inscription(s) LG755528155

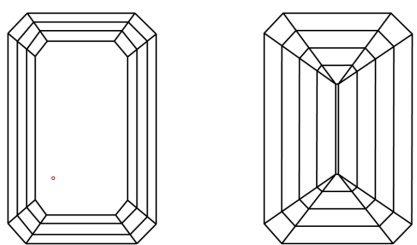
Comments: This Laboratory Grown Diamond was created by Chemical Vapor Deposition (CVD) growth process. Type IIa

PROPORTIONS



Sample Image Used

CLARITY CHARACTERISTICS



KEY TO SYMBOLS
Red symbols indicate internal characteristics.
Green symbols indicate external characteristics.

Table with columns D, E, F, G, H, I, J, Faint, Very Light, Light

Table with columns FL, IF, VS 1-2, VS 1-2, SI 1-2, I 1-3 and corresponding descriptions like Flawless, Internally Flawless, etc.

