



ELECTRONIC COPY

LG756503269
Report verification at igi.org



December 11, 2025
IGI Report Number **LG756503269**
Description **LABORATORY GROWN DIAMOND**
Shape and Cutting Style **ROUND BRILLIANT**
Measurements **10.34 - 10.36 X 6.18 MM**
GRADING RESULTS
Carat Weight **4.01 CARATS**
Color Grade **FANCY YELLOW**
Clarity Grade **VS 2**
Cut Grade **EXCELLENT**

December 11, 2025
IGI Report Number **LG756503269**
Description **LABORATORY GROWN DIAMOND**
Shape and Cutting Style **ROUND BRILLIANT**
Measurements **10.34 - 10.36 X 6.18 MM**

GRADING RESULTS

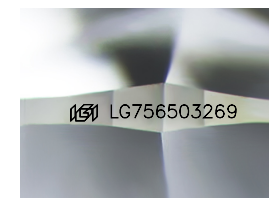
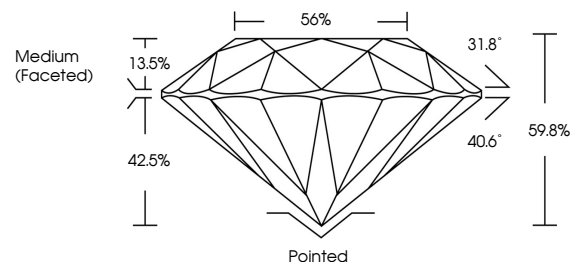
Carat Weight **4.01 CARATS**
Color Grade **FANCY YELLOW**
Clarity Grade **VS 2**
Cut Grade **EXCELLENT**

ADDITIONAL GRADING INFORMATION

Polish **EXCELLENT**
Symmetry **EXCELLENT**
Fluorescence **VERY SLIGHT**
Inscription(s) **LG756503269**

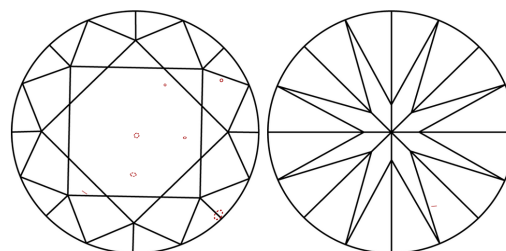
Comments: This Laboratory Grown Diamond was created by Chemical Vapor Deposition (CVD) growth process.
Indications of post-growth treatment.

PROPORTIONS



Sample Image Used

CLARITY CHARACTERISTICS



KEY TO SYMBOLS

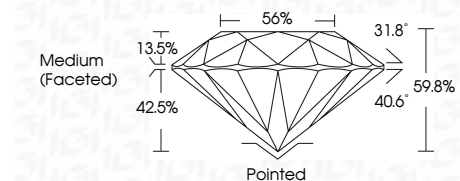
Red symbols indicate internal characteristics.
Green symbols indicate external characteristics.

COLOR

D E F G H I J Faint Very Light Light

CLARITY

FL	IF	VS ¹⁻²	VS ¹⁻²	SI ¹⁻²	I ¹⁻³
Flawless	Internally Flawless	Very Very Slightly Included	Very Slightly Included	Slightly Included	Included



ADDITIONAL GRADING INFORMATION

Polish **EXCELLENT**
Symmetry **EXCELLENT**
Fluorescence **VERY SLIGHT**
Inscription(s) **LG756503269**
Comments: This Laboratory Grown Diamond was created by Chemical Vapor Deposition (CVD) growth process.
Indications of post-growth treatment.



IGI



December 11, 2025
IGI Report No **LG756503269**
ROUND BRILLIANT
4.01 CARATS
Carat Weight
FANCY YELLOW
Color Grade
VS 2
Clarity Grade
EXCELLENT
Depth **59.8%**
Table **56%**
Girdle
Medium (Faceted)
Culet **Pointed**
Polish **EXCELLENT**
Symmetry **EXCELLENT**
Fluorescence **VERY SLIGHT**
Inscription(s) **LG756503269**
Comments: This Laboratory Grown Diamond was created by Chemical Vapor Deposition (CVD) growth process.
Indications of post-growth treatment.