



ELECTRONIC COPY

LG756503831
Report verification at igi.org



December 13, 2025

IGI Report Number LG756503831

Description LABORATORY GROWN DIAMOND

Shape and Cutting Style ROUND BRILLIANT

Measurements 8.66 - 8.73 X 5.48 MM

GRADING RESULTS

Carat Weight 2.56 CARATS

Color Grade E

Clarity Grade VS 1

Cut Grade EXCELLENT

December 13, 2025

IGI Report Number LG756503831

Description LABORATORY GROWN DIAMOND

Shape and Cutting Style ROUND BRILLIANT

Measurements 8.66 - 8.73 X 5.48 MM

GRADING RESULTS

Carat Weight 2.56 CARATS

Color Grade E

Clarity Grade VS 1

Cut Grade EXCELLENT

ADDITIONAL GRADING INFORMATION

Polish EXCELLENT

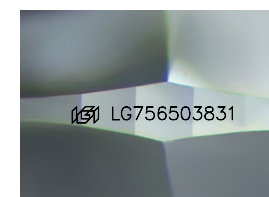
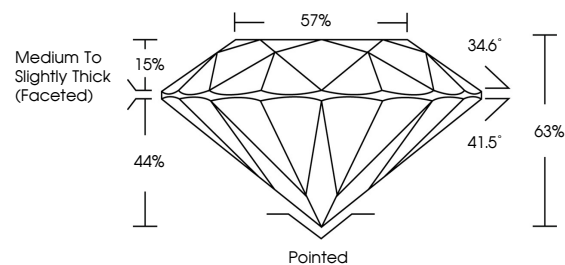
Symmetry EXCELLENT

Fluorescence NONE

Inscription(s) IGI LG756503831

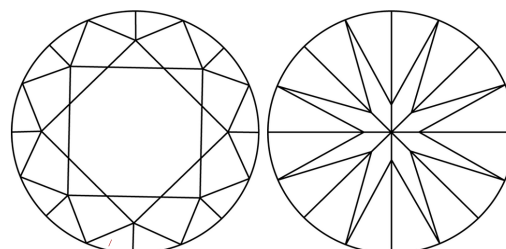
Comments: This Laboratory Grown Diamond was created by Chemical Vapor Deposition (CVD) growth process. Type IIa

PROPORTIONS



Sample Image Used

CLARITY CHARACTERISTICS



KEY TO SYMBOLS

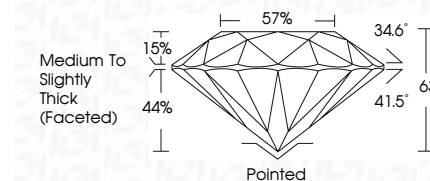
Red symbols indicate internal characteristics. Green symbols indicate external characteristics.

COLOR

D E F G H I J Faint Very Light Light

CLARITY

FL IF VS 1-2 VS 2-3 SI 1-2 I 1-3
Flawless Internally Flawless Very Very Slightly Included Very Slightly Included Slightly Included Included



ADDITIONAL GRADING INFORMATION

Polish EXCELLENT

Symmetry EXCELLENT

Fluorescence NONE

Inscription(s) IGI LG756503831

Comments: This Laboratory Grown Diamond was created by Chemical Vapor Deposition (CVD) growth process. Type IIa



Table with 2 columns: Property and Value. Includes: December 13, 2025, IGI Report No LG756503831, ROUND BRILLIANT, 8.66 - 8.73 X 5.48 MM, 2.56 CARATS, E, VS 1, EXCELLENT, 65%, 57%, Medium To Slightly Thick (Faceted), Pointed, EXCELLENT, EXCELLENT, NONE, IGI LG756503831, Comments: This Laboratory Grown Diamond was created by Chemical Vapor Deposition (CVD) growth process. Type IIa