



ELECTRONIC COPY

LG756506120
Report verification at igi.org



December 24, 2025

IGI Report Number **LG756506120**

Description **LABORATORY GROWN DIAMOND**

Shape and Cutting Style **ROUND BRILLIANT**

Measurements **9.59 - 9.66 X 5.81 MM**

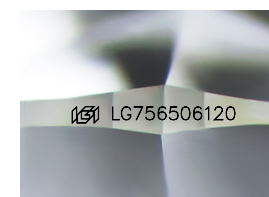
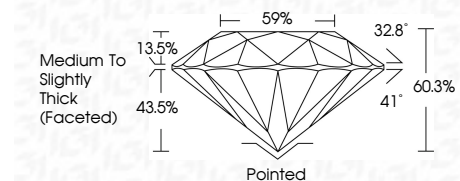
GRADING RESULTS

Carat Weight **3.30 CARATS**

Color Grade **F**

Clarity Grade **VVS 2**

Cut Grade **IDEAL**



Sample Image Used

ADDITIONAL GRADING INFORMATION

Polish **EXCELLENT**

Symmetry **EXCELLENT**

Fluorescence **NONE**

Inscription(s) **IGI LG756506120**

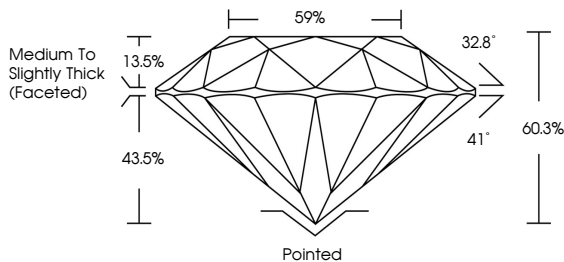
Comments: This Laboratory Grown Diamond was created by Chemical Vapor Deposition (CVD) growth process. Type IIa



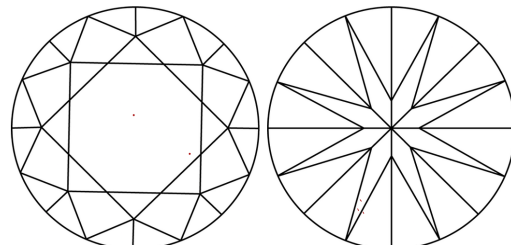
December 24, 2025	IGI Report No LG756506120	3.30 CARATS	F	Pointed
ROUND BRILLIANT	9.59 - 9.66 X 5.81 MM	Carat Weight	VVS 2	EXCELLENT
		Color Grade	IDEAL	EXCELLENT
		Clarity Grade	60.3%	NONE
		Cut Grade	59%	IGI LG756506120
		Table	Medium To Slightly Thick (Faceted)	
		Depth		
		Grade		
		Culet		
		Polish		
		Symmetry		
		Fluorescence		
		Inscription(s)		

Comments: This Laboratory Grown Diamond was created by Chemical Vapor Deposition (CVD) growth process. Type IIa

PROPORTIONS



CLARITY CHARACTERISTICS



KEY TO SYMBOLS

Red symbols indicate internal characteristics.
Green symbols indicate external characteristics.

COLOR

D	E	F	G	H	I	J	Faint	Very Light	Light
---	---	---	---	---	---	---	-------	------------	-------

CLARITY

FL	IF	VVS ¹⁻²	VS ¹⁻²	SI ¹⁻²	I ¹⁻³
Flawless	Internally Flawless	Very Very Slightly Included	Very Slightly Included	Slightly Included	Included

