



December 11, 2025

IGI Report Number **LG756513689**

**PRINCESS CUT**

**LABORATORY GROWN DIAMOND**

**4.82 X 4.81 X 3.55 MM**

|                |                        |
|----------------|------------------------|
| Carat Weight   | <b>0.71 CARAT</b>      |
| Color Grade    | <b>F</b>               |
| Clarity Grade  | <b>VVS 1</b>           |
| Cut Grade      | <b>VERY GOOD</b>       |
| Polish         | <b>EXCELLENT</b>       |
| Symmetry       | <b>EXCELLENT</b>       |
| Fluorescence   | <b>NONE</b>            |
| Inscription(s) | <b>IGI LG756513689</b> |

Comments: As Grown - No indication of post-growth treatment. This Laboratory Grown Diamond was created by High Pressure High Temperature (HPHT) growth process. Type II

**LABORATORY GROWN DIAMOND REPORT**

December 11, 2025

IGI Report Number **LG756513689**

Description **LABORATORY GROWN DIAMOND**

Shape and Cutting Style **PRINCESS CUT**

Measurements **4.82 X 4.81 X 3.55 MM**

**GRADING RESULTS**

Carat Weight **0.71 CARAT**

Color Grade **F**

Clarity Grade **VVS 1**

Cut Grade **VERY GOOD**

**ADDITIONAL GRADING INFORMATION**

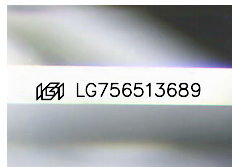
Polish **EXCELLENT**

Symmetry **EXCELLENT**

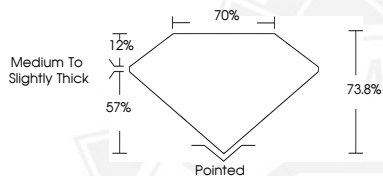
Fluorescence **NONE**

Inscription(s) **IGI LG756513689**

Comments: As Grown - No indication of post-growth treatment. This Laboratory Grown Diamond was created by High Pressure High Temperature (HPHT) growth process. Type II



Sample Image Used



December 11, 2025

IGI Report Number **LG756513689**

**PRINCESS CUT**

**LABORATORY GROWN DIAMOND**

**4.82 X 4.81 X 3.55 MM**

|                |                        |
|----------------|------------------------|
| Carat Weight   | <b>0.71 CARAT</b>      |
| Color Grade    | <b>F</b>               |
| Clarity Grade  | <b>VVS 1</b>           |
| Cut Grade      | <b>VERY GOOD</b>       |
| Polish         | <b>EXCELLENT</b>       |
| Symmetry       | <b>EXCELLENT</b>       |
| Fluorescence   | <b>NONE</b>            |
| Inscription(s) | <b>IGI LG756513689</b> |

Comments: As Grown - No indication of post-growth treatment. This Laboratory Grown Diamond was created by High Pressure High Temperature (HPHT) growth process. Type II



THIS DOCUMENT WAS PRODUCED WITH THE FOLLOWING SECURITY MEASURES: SPECIAL DOCUMENT PAPER, INK SCREENS, WATERMARK, BACKGROUND DESIGNS, HOLOGRAM AND OTHER SECURITY FEATURES NOT LISTED AND DO EXCEED DOCUMENT SECURITY INDUSTRY GUIDELINES.