



January 21, 2026

IGI Report Number **LG756513962**

**PEAR BRILLIANT**

**LABORATORY GROWN DIAMOND**

**5.80 X 3.79 X 2.41 MM**

Carat Weight **0.31 CARAT**

Color Grade **D**

Clarity Grade **VVS 1**

Cut Grade **VERY GOOD**

Polish **EXCELLENT**

Symmetry **VERY GOOD**

Fluorescence **NONE**

Inscription(s) **IGI LG756513962**

Comments: As Grown - No indication of post-growth treatment. This Laboratory Grown Diamond was created by High Pressure High Temperature (HPHT) growth process. Type II

**LABORATORY GROWN DIAMOND REPORT**

January 21, 2026

IGI Report Number

**LG756513962**

Description

**LABORATORY GROWN DIAMOND**

Shape and Cutting Style

**PEAR BRILLIANT**

Measurements

**5.80 X 3.79 X 2.41 MM**

**GRADING RESULTS**

Carat Weight

**0.31 CARAT**

Color Grade

**D**

Clarity Grade

**VVS 1**

Cut Grade

**VERY GOOD**

**ADDITIONAL GRADING INFORMATION**

Polish

**EXCELLENT**

Symmetry

**VERY GOOD**

Fluorescence

**NONE**

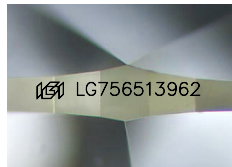
Inscription(s)

**IGI LG756513962**

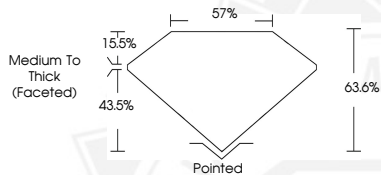
Comments: As Grown - No indication of post-growth treatment.

This Laboratory Grown Diamond was created by High Pressure High Temperature (HPHT) growth process.

Type II



Sample Image Used



January 21, 2026

IGI Report Number **LG756513962**

**PEAR BRILLIANT**

**LABORATORY GROWN DIAMOND**

**5.80 X 3.79 X 2.41 MM**

Carat Weight **0.31 CARAT**

Color Grade **D**

Clarity Grade **VVS 1**

Cut Grade **VERY GOOD**

Polish **EXCELLENT**

Symmetry **VERY GOOD**

Fluorescence **NONE**

Inscription(s) **IGI LG756513962**

Comments: As Grown - No indication of post-growth treatment. This Laboratory Grown Diamond was created by High Pressure High Temperature (HPHT) growth process. Type II



THIS DOCUMENT WAS PRODUCED WITH THE FOLLOWING SECURITY MEASURES: SPECIAL DOCUMENT PAPER, INK SCREENS, WATERMARK, BACKGROUND DESIGNS, HOLOGRAM AND OTHER SECURITY FEATURES NOT LISTED AND DO EXCEED DOCUMENT SECURITY INDUSTRY GUIDELINES.