



ELECTRONIC COPY

LG756515596
Report verification at igi.org



December 11, 2025

IGI Report Number **LG756515596**

Description **LABORATORY GROWN DIAMOND**

Shape and Cutting Style **ROUND BRILLIANT**

Measurements **9.40 - 9.46 X 5.74 MM**

GRADING RESULTS

Carat Weight **3.10 CARATS**

Color Grade **E**

Clarity Grade **VVS 2**

Cut Grade **IDEAL**

December 11, 2025
IGI Report Number **LG756515596**
Description **LABORATORY GROWN DIAMOND**
Shape and Cutting Style **ROUND BRILLIANT**
Measurements **9.40 - 9.46 X 5.74 MM**

GRADING RESULTS

Carat Weight **3.10 CARATS**

Color Grade **E**

Clarity Grade **VVS 2**

Cut Grade **IDEAL**

ADDITIONAL GRADING INFORMATION

Polish **EXCELLENT**

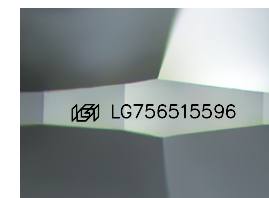
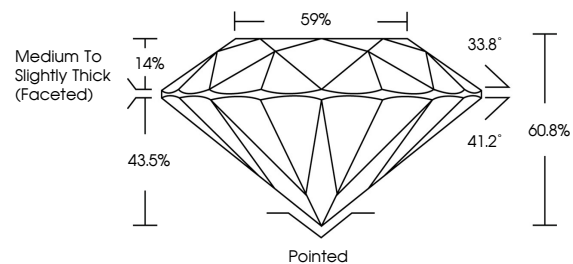
Symmetry **EXCELLENT**

Fluorescence **NONE**

Inscription(s) **LG756515596**

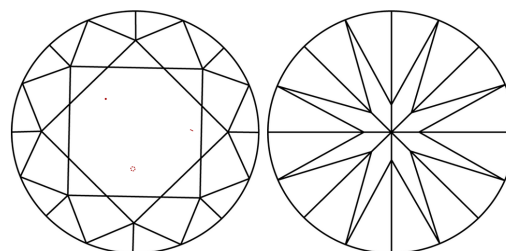
Comments: This Laboratory Grown Diamond was created by Chemical Vapor Deposition (CVD) growth process. Type IIa

PROPORTIONS



Sample Image Used

CLARITY CHARACTERISTICS



KEY TO SYMBOLS

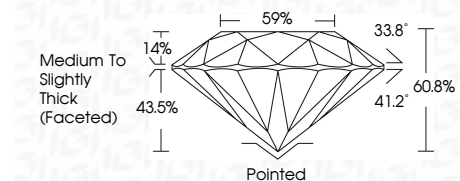
Red symbols indicate internal characteristics.
Green symbols indicate external characteristics.

COLOR

D E F G H I J Faint Very Light Light

CLARITY

FL	IF	VVS ¹⁻²	VS ¹⁻²	SI ¹⁻²	I ¹⁻³
Flawless	Internally Flawless	Very Very Slightly Included	Very Slightly Included	Slightly Included	Included



ADDITIONAL GRADING INFORMATION

Polish **EXCELLENT**

Symmetry **EXCELLENT**

Fluorescence **NONE**

Inscription(s) **LG756515596**

Comments: This Laboratory Grown Diamond was created by Chemical Vapor Deposition (CVD) growth process. Type IIa



December 11, 2025	IGI Report No LG756515596	3.10 CARATS	E	Pointed	EXCELLENT	EXCELLENT	NONE	LG756515596
ROUND BRILLIANT	9.40 - 9.46 X 5.74 MM	Color Grade	VVS 2	Depth	IDEAL	60.8%	Medium To Slightly Thick (Faceted)	
		Clarity Grade	VVS 2	Cut Grade	IDEAL	60.8%	Medium To Slightly Thick (Faceted)	
		Polish	EXCELLENT	Symmetry	EXCELLENT	NONE		
		Fluorescence	NONE	Inscription(s)				

Comments: This Laboratory Grown Diamond was created by Chemical Vapor Deposition (CVD) growth process. Type IIa