



ELECTRONIC COPY

LG756518149
Report verification at igi.org



December 12, 2025
IGI Report Number LG756518149
Description LABORATORY GROWN DIAMOND
Shape and Cutting Style ROUND BRILLIANT
Measurements 8.60 - 8.65 X 5.46 MM
GRADING RESULTS
Carat Weight 2.55 CARATS
Color Grade E
Clarity Grade VS 1
Cut Grade EXCELLENT

December 12, 2025
IGI Report Number LG756518149
Description LABORATORY GROWN DIAMOND
Shape and Cutting Style ROUND BRILLIANT
Measurements 8.60 - 8.65 X 5.46 MM

GRADING RESULTS

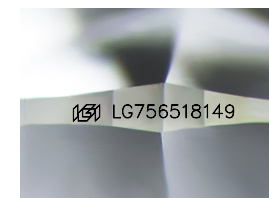
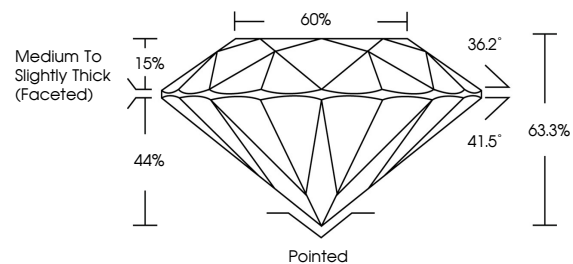
Carat Weight 2.55 CARATS
Color Grade E
Clarity Grade VS 1
Cut Grade EXCELLENT

ADDITIONAL GRADING INFORMATION

Polish EXCELLENT
Symmetry EXCELLENT
Fluorescence NONE
Inscription(s) IGI LG756518149

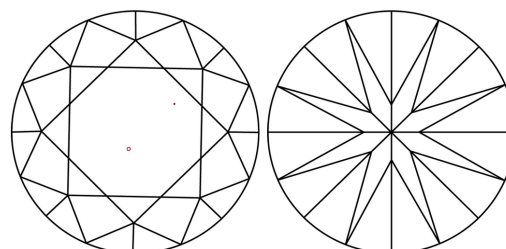
Comments: This Laboratory Grown Diamond was created by Chemical Vapor Deposition (CVD) growth process. Type IIa

PROPORTIONS



Sample Image Used

CLARITY CHARACTERISTICS



KEY TO SYMBOLS

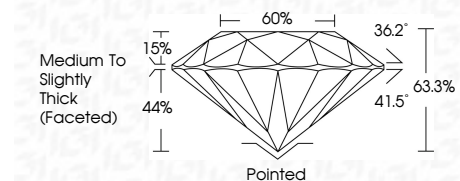
Red symbols indicate internal characteristics.
Green symbols indicate external characteristics.

COLOR

D E F G H I J Faint Very Light Light

CLARITY

Table with columns: FL, IF, VS 1-2, VS 1-2, SI 1-2, I 1-3 and corresponding descriptions: Flawless, Internally Flawless, Very Very Slightly Included, Very Slightly Included, Slightly Included, Included



ADDITIONAL GRADING INFORMATION

Polish EXCELLENT
Symmetry EXCELLENT
Fluorescence NONE
Inscription(s) IGI LG756518149
Comments: This Laboratory Grown Diamond was created by Chemical Vapor Deposition (CVD) growth process. Type IIa



December 12, 2025
IGI Report No LG756518149
ROUND BRILLIANT
8.60 - 8.65 X 5.46 MM
2.55 CARATS E
EXCELLENT VS 1
63.3% 60%
Medium To Slightly Thick (Faceted)
Pointed EXCELLENT EXCELLENT NONE
Polish EXCELLENT
Symmetry EXCELLENT
Fluorescence NONE
Inscription(s) IGI LG756518149
Comments: This Laboratory Grown Diamond was created by Chemical Vapor Deposition (CVD) growth process. Type IIa