



ELECTRONIC COPY

LABORATORY GROWN DIAMOND REPORT

LG756524726
Report verification at igi.org

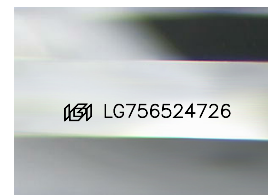
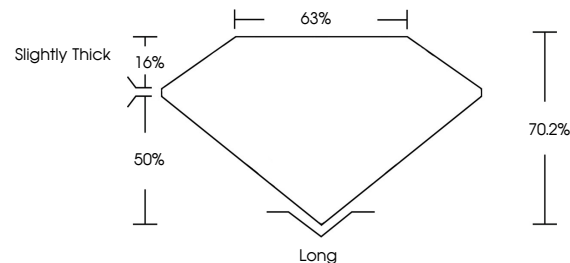
| | |
|-------------------------|--------------------------|
| December 30, 2025 | |
| IGI Report Number | LG756524726 |
| Description | LABORATORY GROWN DIAMOND |
| Shape and Cutting Style | EMERALD CUT |
| Measurements | 10.35 X 6.97 X 4.89 MM |
| GRADING RESULTS | |
| Carat Weight | 3.58 CARATS |
| Color Grade | G |
| Clarity Grade | VS 1 |

ADDITIONAL GRADING INFORMATION

| | |
|----------------|-----------------|
| Polish | EXCELLENT |
| Symmetry | EXCELLENT |
| Fluorescence | NONE |
| Inscription(s) | 151 LG756524726 |

Comments: This Laboratory Grown Diamond was created by Chemical Vapor Deposition (CVD) growth process.
Type IIa

PROPORTIONS



Sample Image Used

COLOR

D E F G H I J Faint Very Light Light

CLARITY

| FL | IF | VVS ¹⁻² | VS ¹⁻² | SI ¹⁻² | I ¹⁻³ |
|----------|---------------------|-----------------------------|------------------------|-------------------|------------------|
| Flawless | Internally Flawless | Very Very Slightly Included | Very Slightly Included | Slightly Included | Included |

LABORATORY GROWN DIAMOND REPORT



| | |
|-------------------------|--------------------------|
| December 30, 2025 | |
| IGI Report Number | LG756524726 |
| Description | LABORATORY GROWN DIAMOND |
| Shape and Cutting Style | EMERALD CUT |
| Measurements | 10.35 X 6.97 X 4.89 MM |
| GRADING RESULTS | |
| Carat Weight | 3.58 CARATS |
| Color Grade | G |
| Clarity Grade | VS 1 |

ADDITIONAL GRADING INFORMATION

| | |
|---|---------------------------|
| Polish | EXCELLENT |
| Symmetry | EXCELLENT |
| Fluorescence | NONE |
| Inscription(s) | LG LG756524726 |
| <p>Comments: This Laboratory Grown Diamond was created by Chemical Vapor Deposition (CVD) growth process.</p> <p>Type IIa</p> | |



IGI



© IGI 2020, International Gemological Institute

FD - 10 20



THIS DOCUMENT WAS PRODUCED WITH THE FOLLOWING SECURITY MEASURES: SPECIAL DOCUMENT PAPER, INK SCREENS, WATERMARK, BACKGROUND DESIGNS, HOLOGRAM AND OTHER SECURITY FEATURES NOT LISTED AND DO EXCEED DOCUMENT SECURITY INDUSTRY GUIDELINES

December 30, 2025
IGI Report No LG756524726

| | | |
|------------------------|----------------|----------------|
| 10.35 X 6.97 X 4.89 MM | Carat Weight | 3.58 CARATS |
| | Color Grade | G |
| | Clarity Grade | VS 1 |
| | Depth | 70.2% |
| | Table | 69% |
| | Girdle | Slightly Thick |
| | Culet | Long |
| | Polish | EXCELLENT |
| | Symmetry | EXCELLENT |
| | Fluorescence | NONE |
| | Annotations(s) | 48811774592794 |

Comments:
This Laboratory Grown Diamond was created by Chemical Vapor Deposition (CVD) growth process.
Type IIa

www.igi.org