



December 17, 2025

**IGI Report Number** LG756533707  
**ROUND BRILLIANT**  
**LABORATORY GROWN DIAMOND**  
**5.73 - 5.77 X 3.34 MM**

**Carat Weight** 0.67 CARAT  
**Color Grade** FANCY DEEP ORANGE

**Clarity Grade** VVS 2  
**Cut Grade** VERY GOOD  
**Polish** VERY GOOD  
**Symmetry** VERY GOOD  
**Fluorescence** NONE  
**Inscription(s)** IGI LG756533707

Comments: This Laboratory Grown Diamond was created by High Pressure High Temperature (HPHT) growth process. Indications of post-growth treatment.

**LABORATORY GROWN DIAMOND REPORT**

December 17, 2025

IGI Report Number **LG756533707**

Description **LABORATORY GROWN DIAMOND**

Shape and Cutting Style **ROUND BRILLIANT**

Measurements **5.73 - 5.77 X 3.34 MM**

**GRADING RESULTS**

**Carat Weight** 0.67 CARAT

**Color Grade** FANCY DEEP ORANGE

**Clarity Grade** VVS 2

**Cut Grade** VERY GOOD

**ADDITIONAL GRADING INFORMATION**

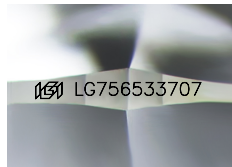
**Polish** VERY GOOD

**Symmetry** VERY GOOD

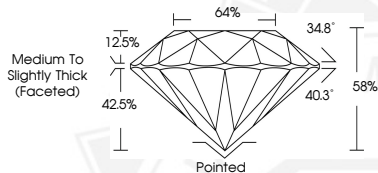
**Fluorescence** NONE

**Inscription(s)** IGI LG756533707

Comments: This Laboratory Grown Diamond was created by High Pressure High Temperature (HPHT) growth process. Indications of post-growth treatment.



Sample Image Used



December 17, 2025

**IGI Report Number** LG756533707  
**ROUND BRILLIANT**  
**LABORATORY GROWN DIAMOND**  
**5.73 - 5.77 X 3.34 MM**

**Carat Weight** 0.67 CARAT  
**Color Grade** FANCY DEEP ORANGE

**Clarity Grade** VVS 2  
**Cut Grade** VERY GOOD  
**Polish** VERY GOOD  
**Symmetry** VERY GOOD  
**Fluorescence** NONE  
**Inscription(s)** IGI LG756533707

Comments: This Laboratory Grown Diamond was created by High Pressure High Temperature (HPHT) growth process. Indications of post-growth treatment.

THIS DOCUMENT WAS PRODUCED WITH THE FOLLOWING SECURITY MEASURES: SPECIAL DOCUMENT PAPER, INK SCREENS, WATERMARK, BACKGROUND DESIGNS, HOLOGRAM AND OTHER SECURITY FEATURES NOT LISTED AND DO EXCEED DOCUMENT SECURITY INDUSTRY GUIDELINES.

For terms & conditions and to verify this report, please visit [www.igi.org](http://www.igi.org)