



**ELECTRONIC COPY**

LG756536445  
Report verification at igi.org



December 10, 2025

IGI Report Number **LG756536445**

Description **LABORATORY GROWN DIAMOND**

Shape and Cutting Style **CUSHION BRILLIANT**

Measurements **9.32 X 6.63 X 4.36 MM**

**GRADING RESULTS**

Carat Weight **2.05 CARATS**

Color Grade **F**

Clarity Grade **VS 1**

December 10, 2025  
IGI Report Number **LG756536445**  
Description **LABORATORY GROWN DIAMOND**  
Shape and Cutting Style **CUSHION BRILLIANT**  
Measurements **9.32 X 6.63 X 4.36 MM**

**GRADING RESULTS**

Carat Weight **2.05 CARATS**

Color Grade **F**

Clarity Grade **VS 1**

**ADDITIONAL GRADING INFORMATION**

Polish **EXCELLENT**

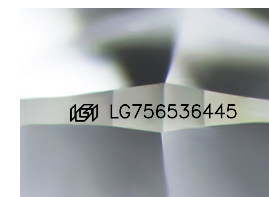
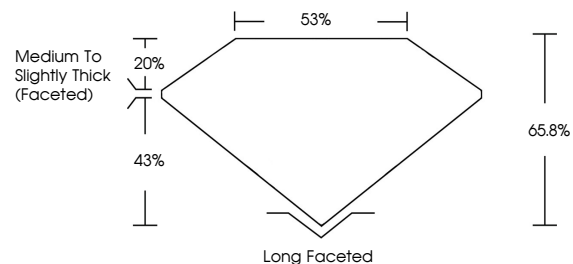
Symmetry **EXCELLENT**

Fluorescence **NONE**

Inscription(s) **IGI LG756536445**

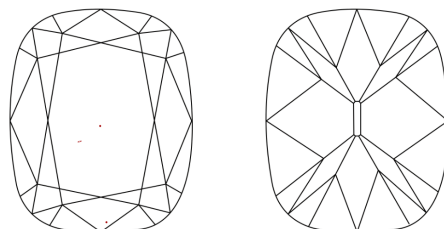
Comments: This Laboratory Grown Diamond was created by Chemical Vapor Deposition (CVD) growth process. Type IIa

**PROPORTIONS**



Sample Image Used

**CLARITY CHARACTERISTICS**



**KEY TO SYMBOLS**

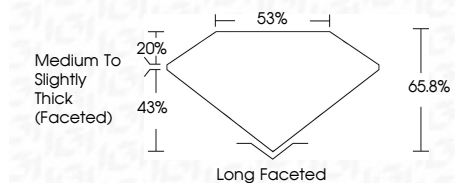
Red symbols indicate internal characteristics.  
Green symbols indicate external characteristics.

**COLOR**

D E F G H I J Faint Very Light Light

**CLARITY**

FL	IF	VS <sup>1-2</sup>	VS <sup>1-2</sup>	SI <sup>1-2</sup>	I <sup>1-3</sup>
Flawless	Internally Flawless	Very Very Slightly Included	Very Slightly Included	Slightly Included	Included



**ADDITIONAL GRADING INFORMATION**

Polish **EXCELLENT**

Symmetry **EXCELLENT**

Fluorescence **NONE**

Inscription(s) **IGI LG756536445**

Comments: This Laboratory Grown Diamond was created by Chemical Vapor Deposition (CVD) growth process. Type IIa



**IGI**



December 10, 2025  
IGI Report No LG756536445  
CUSHION BRILLIANT  
9.32 X 6.63 X 4.36 MM  
2.05 CARATS  
F  
Color Grade  
VS 1  
Clarity Grade  
65.8%  
43%  
Depth  
53%  
Table  
Medium to Slightly Thick (Faceted)  
Long Faceted  
Culet  
EXCELLENT  
Polish  
EXCELLENT  
Symmetry  
EXCELLENT  
Fluorescence  
NONE  
Inscription(s)  
IGI LG756536445  
Comments: This Laboratory Grown Diamond was created by Chemical Vapor Deposition (CVD) growth process. Type IIa