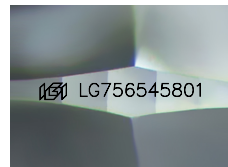




December 10, 2025
IGI Report Number LG756545801
ROUND BRILLIANT
LABORATORY GROWN DIAMOND
4.97 - 4.99 X 3.07 MM
0.47 CARAT
D
VVS 2
IDEAL
EXCELLENT
EXCELLENT
NONE
Inscription(s) IGI LG756545801

LABORATORY GROWN DIAMOND REPORT

December 10, 2025
 IGI Report Number **LG756545801**
 Description **LABORATORY GROWN DIAMOND**
 Shape and Cutting Style **ROUND BRILLIANT**
 Measurements **4.97 - 4.99 X 3.07 MM**



Sample Image Used

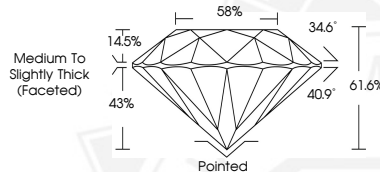
GRADING RESULTS

Carat Weight **0.47 CARAT**
 Color Grade **D**
 Clarity Grade **VVS 2**
 Cut Grade **IDEAL**

ADDITIONAL GRADING INFORMATION

Polish **EXCELLENT**
 Symmetry **EXCELLENT**
 Fluorescence **NONE**
 Inscription(s) **IGI LG756545801**

Comments: This Laboratory Grown Diamond was created by Chemical Vapor Deposition (CVD) growth process. Type IIa



December 10, 2025
IGI Report Number LG756545801
ROUND BRILLIANT
LABORATORY GROWN DIAMOND
4.97 - 4.99 X 3.07 MM
0.47 CARAT
D
VVS 2
IDEAL
EXCELLENT
EXCELLENT
NONE
Inscription(s) IGI LG756545801

Comments: This Laboratory Grown Diamond was created by Chemical Vapor Deposition (CVD) growth process. Type IIa



THIS DOCUMENT WAS PRODUCED WITH THE FOLLOWING SECURITY MEASURES: SPECIAL DOCUMENT PAPER, INK SCREENS, WATERMARK BACKGROUND DESIGNS, HOLOGRAM AND OTHER SECURITY FEATURES NOT LISTED AND DO EXCEED DOCUMENT SECURITY INDUSTRY GUIDELINES.