



**ELECTRONIC COPY**

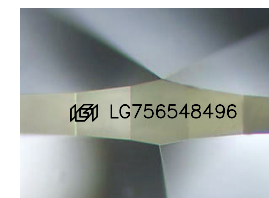
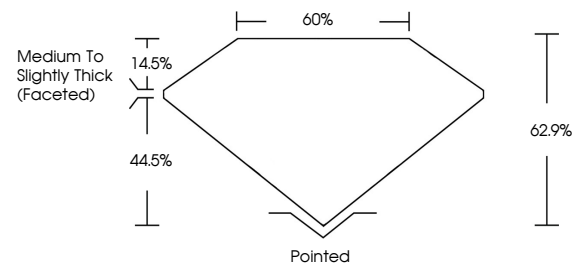
LG756548496  
Report verification at igi.org



December 12, 2025  
IGI Report Number **LG756548496**  
Description **LABORATORY GROWN DIAMOND**  
Shape and Cutting Style **PEAR BRILLIANT**  
Measurements **14.23 X 8.93 X 5.62 MM**  
**GRADING RESULTS**  
Carat Weight **4.08 CARATS**  
Color Grade **D**  
Clarity Grade **VS 1**

December 12, 2025  
IGI Report Number **LG756548496**  
Description **LABORATORY GROWN DIAMOND**  
Shape and Cutting Style **PEAR BRILLIANT**  
Measurements **14.23 X 8.93 X 5.62 MM**

**PROPORTIONS**

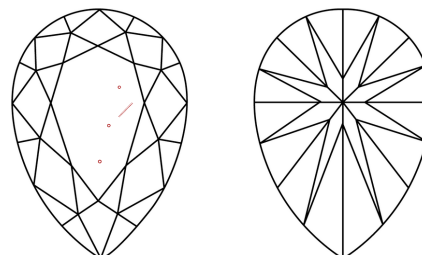


Sample Image Used

**GRADING RESULTS**

Carat Weight **4.08 CARATS**  
Color Grade **D**  
Clarity Grade **VS 1**

**CLARITY CHARACTERISTICS**



**KEY TO SYMBOLS**

Red symbols indicate internal characteristics.  
Green symbols indicate external characteristics.

**ADDITIONAL GRADING INFORMATION**

Polish **EXCELLENT**  
Symmetry **EXCELLENT**  
Fluorescence **NONE**  
Inscription(s) **IGI LG756548496**

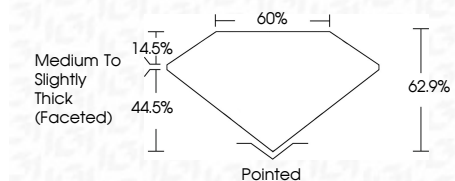
Comments: This Laboratory Grown Diamond was created by Chemical Vapor Deposition (CVD) growth process. Type IIa

**COLOR**

D E F G H I J Faint Very Light Light

**CLARITY**

FL	IF	VS <sup>1-2</sup>	VS <sup>1-2</sup>	SI <sup>1-2</sup>	I <sup>1-3</sup>
Flawless	Internally Flawless	Very Very Slightly Included	Very Slightly Included	Slightly Included	Included



**ADDITIONAL GRADING INFORMATION**

Polish **EXCELLENT**  
Symmetry **EXCELLENT**  
Fluorescence **NONE**  
Inscription(s) **IGI LG756548496**  
Comments: This Laboratory Grown Diamond was created by Chemical Vapor Deposition (CVD) growth process. Type IIa



December 12, 2025  
IGI Report No **LG756548496**  
**PEAR BRILLIANT**  
**4.08 CARATS**  
Carat Weight **D**  
Color Grade **VS 1**  
Clarity Grade **62.9%**  
Depth **60%**  
Table  
Girdle  
Medium to Slightly Thick (Faceted)  
Culet Pointed  
Polish EXCELLENT  
Symmetry EXCELLENT  
Fluorescence NONE  
Inscription(s) IGI LG756548496  
Comments: This Laboratory Grown Diamond was created by Chemical Vapor Deposition (CVD) growth process. Type IIa