



**ELECTRONIC COPY**

LG756549755  
Report verification at igi.org



December 11, 2025  
IGI Report Number **LG756549755**  
Description **LABORATORY GROWN DIAMOND**  
Shape and Cutting Style **ROUND BRILLIANT**  
Measurements **8.52 - 8.57 X 5.40 MM**  
**GRADING RESULTS**  
Carat Weight **2.42 CARATS**  
Color Grade **D**  
Clarity Grade **VS 2**  
Cut Grade **EXCELLENT**

December 11, 2025  
IGI Report Number **LG756549755**  
Description **LABORATORY GROWN DIAMOND**  
Shape and Cutting Style **ROUND BRILLIANT**  
Measurements **8.52 - 8.57 X 5.40 MM**

**GRADING RESULTS**

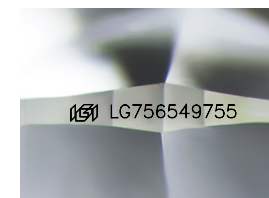
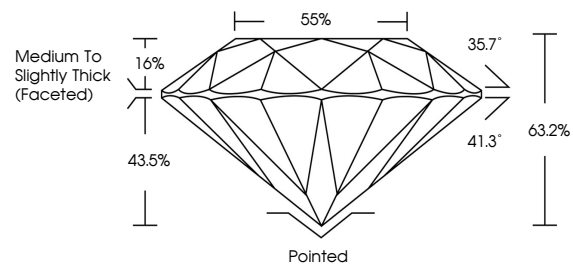
Carat Weight **2.42 CARATS**  
Color Grade **D**  
Clarity Grade **VS 2**  
Cut Grade **EXCELLENT**

**ADDITIONAL GRADING INFORMATION**

Polish **EXCELLENT**  
Symmetry **EXCELLENT**  
Fluorescence **NONE**  
Inscription(s) **IGI LG756549755**

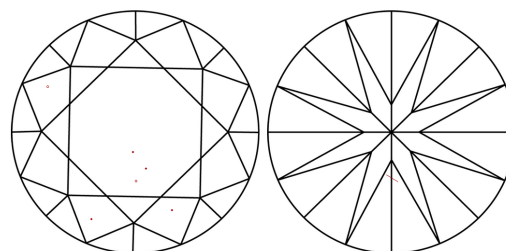
Comments: This Laboratory Grown Diamond was created by Chemical Vapor Deposition (CVD) growth process.  
Type IIa

**PROPORTIONS**



Sample Image Used

**CLARITY CHARACTERISTICS**



**KEY TO SYMBOLS**

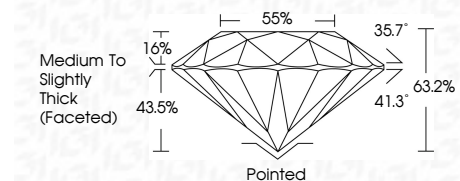
Red symbols indicate internal characteristics.  
Green symbols indicate external characteristics.

**COLOR**

D E F G H I J Faint Very Light Light

**CLARITY**

FL	IF	VS <sup>1-2</sup>	VS <sup>1-2</sup>	SI <sup>1-2</sup>	I <sup>1-3</sup>
Flawless	Internally Flawless	Very Very Slightly Included	Very Slightly Included	Slightly Included	Included



**ADDITIONAL GRADING INFORMATION**

Polish **EXCELLENT**  
Symmetry **EXCELLENT**  
Fluorescence **NONE**  
Inscription(s) **IGI LG756549755**  
Comments: This Laboratory Grown Diamond was created by Chemical Vapor Deposition (CVD) growth process.  
Type IIa



December 11, 2025  
IGI Report No LG756549755  
**ROUND BRILLIANT**  
8.52 - 8.57 X 5.40 MM  
2.42 CARATS  
Color Grade **D**  
Clarity Grade **VS 2**  
Depth **63.2%**  
Table **55%**  
Girdle **Medium To Slightly Thick (Faceted)**  
Culet **Pointed**  
Polish **EXCELLENT**  
Symmetry **EXCELLENT**  
Fluorescence **NONE**  
Inscription(s) **IGI LG756549755**  
Comments: This Laboratory Grown Diamond was created by Chemical Vapor Deposition (CVD) growth process.  
Type IIa