



**ELECTRONIC COPY**

LG756574921  
Report verification at igi.org



January 22, 2026

IGI Report Number **LG756574921**

Description **LABORATORY GROWN DIAMOND**

Shape and Cutting Style **CUT CORNERED  
RECTANGULAR MODIFIED  
BRILLIANT**

Measurements **7.82 X 5.53 X 3.70 MM**

**GRADING RESULTS**

Carat Weight **1.53 CARAT**

Color Grade **FANCY YELLOW**

Clarity Grade **VS 1**

**LABORATORY GROWN DIAMOND REPORT**

January 22, 2026

IGI Report Number **LG756574921**

Description **LABORATORY GROWN DIAMOND**

Shape and Cutting Style **CUT CORNERED RECTANGULAR  
MODIFIED BRILLIANT**

Measurements **7.82 X 5.53 X 3.70 MM**

**GRADING RESULTS**

Carat Weight **1.53 CARAT**

Color Grade **FANCY YELLOW**

Clarity Grade **VS 1**

**ADDITIONAL GRADING INFORMATION**

Polish **EXCELLENT**

Symmetry **EXCELLENT**

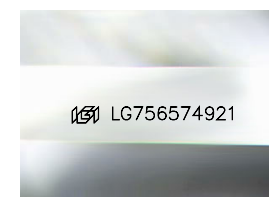
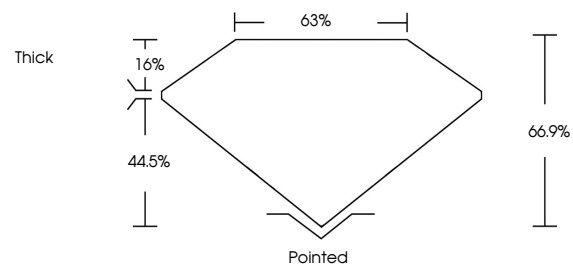
Fluorescence **NONE**

Inscription(s) **IGI LG756574921**

Comments: This Laboratory Grown Diamond was created by Chemical Vapor Deposition (CVD) growth process.

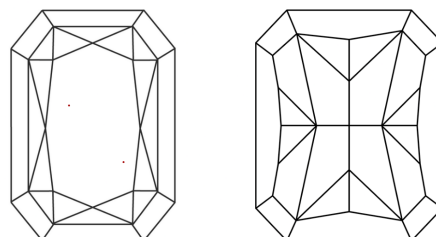
Indications of post-growth treatment.

**PROPORTIONS**



Sample Image Used

**CLARITY CHARACTERISTICS**



**KEY TO SYMBOLS**

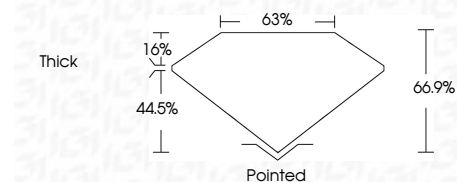
Red symbols indicate internal characteristics.  
Green symbols indicate external characteristics.

**COLOR**

D E F G H I J Faint Very Light Light

**CLARITY**

FL	IF	VS <sup>1-2</sup>	VS <sup>1-2</sup>	SI <sup>1-2</sup>	I <sup>1-3</sup>
Flawless	Internally Flawless	Very Very Slightly Included	Very Slightly Included	Slightly Included	Included



**ADDITIONAL GRADING INFORMATION**

Polish **EXCELLENT**

Symmetry **EXCELLENT**

Fluorescence **NONE**

Inscription(s) **IGI LG756574921**

Comments: This Laboratory Grown Diamond was created by Chemical Vapor Deposition (CVD) growth process. Indications of post-growth treatment.



January 22, 2026  
IGI Report No LG756574921  
CUT CORNERED RECT. MODIFIED BRILLIANT

7.82 X 5.53 X 3.70 MM

1.53 CARAT  
FANCY YELLOW

VS 1

66.9%  
63%  
Thick

Pointed  
EXCELLENT  
EXCELLENT  
NONE  
IGI LG756574921

Comments: This Laboratory Grown Diamond was created by Chemical Vapor Deposition (CVD) growth process. Indications of post-growth treatment.