



**ELECTRONIC COPY**

LG756575564  
Report verification at [igi.org](http://igi.org)



February 2, 2026

IGI Report Number **LG756575564**

Description **LABORATORY GROWN DIAMOND**

Shape and Cutting Style **CUT CORNERED  
RECTANGULAR MODIFIED  
BRILLIANT**

Measurements **6.82 X 4.70 X 3.36 MM**

**GRADING RESULTS**

Carat Weight **1.02 CARAT**

Color Grade **FANCY VIVID BLUE**

Clarity Grade **VS 1**

**LABORATORY GROWN DIAMOND REPORT**

February 2, 2026

IGI Report Number **LG756575564**

Description **LABORATORY GROWN DIAMOND**

Shape and Cutting Style **CUT CORNERED RECTANGULAR  
MODIFIED BRILLIANT**

Measurements **6.82 X 4.70 X 3.36 MM**

**GRADING RESULTS**

Carat Weight **1.02 CARAT**

Color Grade **FANCY VIVID BLUE**

Clarity Grade **VS 1**

**ADDITIONAL GRADING INFORMATION**

Polish **EXCELLENT**

Symmetry **EXCELLENT**

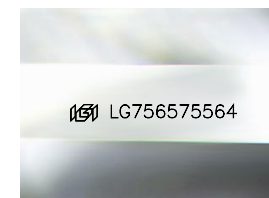
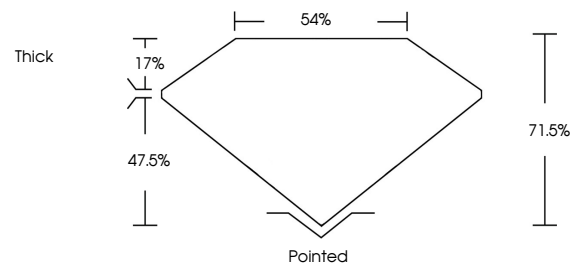
Fluorescence **NONE**

Inscription(s) **IGI LG756575564**

Comments: This Laboratory Grown Diamond was created by Chemical Vapor Deposition (CVD) growth process.

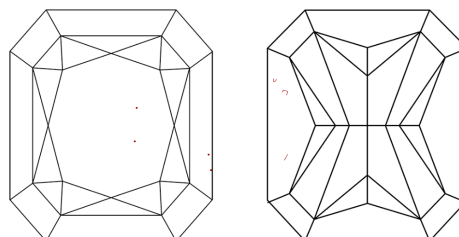
Indications of post-growth treatment.

**PROPORTIONS**



Sample Image Used

**CLARITY CHARACTERISTICS**



**KEY TO SYMBOLS**

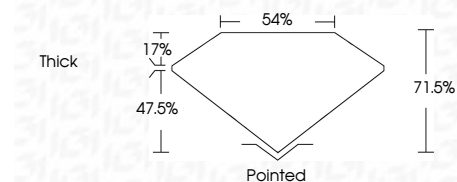
Red symbols indicate internal characteristics.  
Green symbols indicate external characteristics.

**COLOR**

D E F G H I J Faint Very Light Light

**CLARITY**

| FL       | IF                  | VS <sup>1-2</sup>           | VS <sup>1-2</sup>      | SI <sup>1-2</sup> | I <sup>1-3</sup> |
|----------|---------------------|-----------------------------|------------------------|-------------------|------------------|
| Flawless | Internally Flawless | Very Very Slightly Included | Very Slightly Included | Slightly Included | Included         |



**ADDITIONAL GRADING INFORMATION**

Polish **EXCELLENT**

Symmetry **EXCELLENT**

Fluorescence **NONE**

Inscription(s) **IGI LG756575564**

Comments: This Laboratory Grown Diamond was created by Chemical Vapor Deposition (CVD) growth process. Indications of post-growth treatment.



**IGI**



|   |                           |                                       |                       |            |                  |      |        |     |       |         |           |           |      |                 |
|---|---------------------------|---------------------------------------|-----------------------|------------|------------------|------|--------|-----|-------|---------|-----------|-----------|------|-----------------|
| February 2, 2026  | IGI Report No LG756575564 | CUT CORNERED RECT. MODIFIED BRILLIANT | 6.82 X 4.70 X 3.36 MM | 1.02 CARAT | FANCY VIVID BLUE | VS 1 | 71.05% | 54% | Thick | Pointed | EXCELLENT | EXCELLENT | NONE | IGI LG756575564 |
| <p>Comments: This Laboratory Grown Diamond was created by Chemical Vapor Deposition (CVD) growth process. Indications of post-growth treatment.</p> |                           |                                       |                       |            |                  |      |        |     |       |         |           |           |      |                 |