



**ELECTRONIC COPY**

LG756579158  
Report verification at igi.org



February 2, 2026

IGI Report Number **LG756579158**

Description **LABORATORY GROWN DIAMOND**

Shape and Cutting Style **CUT CORNERED  
RECTANGULAR MODIFIED  
BRILLIANT**

Measurements **7.09 X 4.90 X 3.49 MM**

**GRADING RESULTS**

Carat Weight **1.03 CARAT**

Color Grade **FANCY LIGHT YELLOW**

Clarity Grade **VVS 1**

February 2, 2026  
IGI Report Number **LG756579158**  
Description **LABORATORY GROWN DIAMOND**  
Shape and Cutting Style **CUT CORNERED RECTANGULAR  
MODIFIED BRILLIANT**  
Measurements **7.09 X 4.90 X 3.49 MM**

**GRADING RESULTS**

Carat Weight **1.03 CARAT**

Color Grade **FANCY LIGHT YELLOW**

Clarity Grade **VVS 1**

**ADDITIONAL GRADING INFORMATION**

Polish **EXCELLENT**

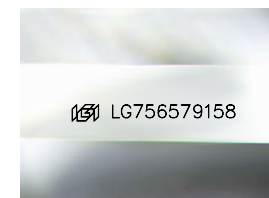
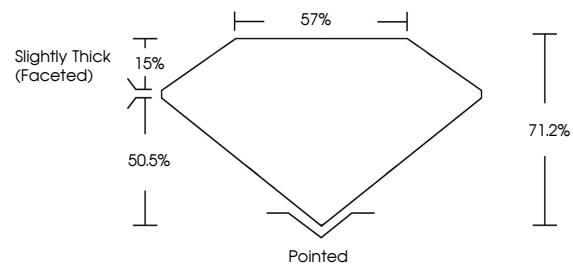
Symmetry **EXCELLENT**

Fluorescence **NONE**

Inscription(s) **IGI LG756579158**

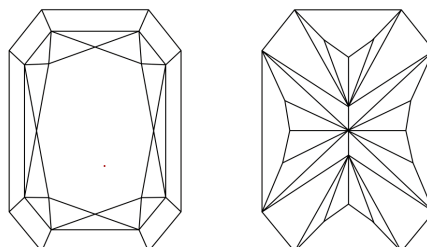
Comments: This Laboratory Grown Diamond was created by Chemical Vapor Deposition (CVD) growth process.

**PROPORTIONS**



Sample Image Used

**CLARITY CHARACTERISTICS**



**KEY TO SYMBOLS**

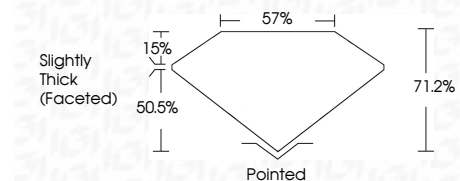
Red symbols indicate internal characteristics.  
Green symbols indicate external characteristics.

**COLOR**

D E F G H I J Faint Very Light Light

**CLARITY**

FL	IF	VVS <sup>1-2</sup>	VS <sup>1-2</sup>	SI <sup>1-2</sup>	I <sup>1-3</sup>
Flawless	Internally Flawless	Very Very Slightly Included	Very Slightly Included	Slightly Included	Included



**ADDITIONAL GRADING INFORMATION**

Polish **EXCELLENT**

Symmetry **EXCELLENT**

Fluorescence **NONE**

Inscription(s) **IGI LG756579158**

Comments: This Laboratory Grown Diamond was created by Chemical Vapor Deposition (CVD) growth process.



**IGI**



February 2, 2026  
IGI Report No LG756579158  
CUT CORNERED RECT. MODIFIED BRILLIANT  
7.09 X 4.90 X 3.49 MM  
Carat Weight 1.03 CARAT  
Color Grade FANCY LIGHT YELLOW  
Clarity Grade VVS 1  
Depth 71.2%  
Table 57%  
Girdle Slightly Thick (Faceted)  
Culet Pointed  
Polish EXCELLENT  
Symmetry EXCELLENT  
Fluorescence NONE  
Inscription(s) IGI LG756579158  
Comments: This Laboratory Grown Diamond was created by Chemical Vapor Deposition (CVD) growth process.