



**ELECTRONIC COPY**

LG756583550  
Report verification at igi.org



December 13, 2025

IGI Report Number **LG756583550**

Description **LABORATORY GROWN DIAMOND**

Shape and Cutting Style **EMERALD CUT**

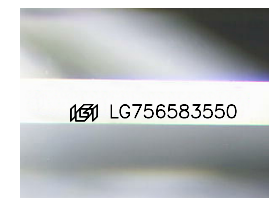
Measurements **9.57 X 6.79 X 4.64 MM**

**GRADING RESULTS**

Carat Weight **2.98 CARATS**

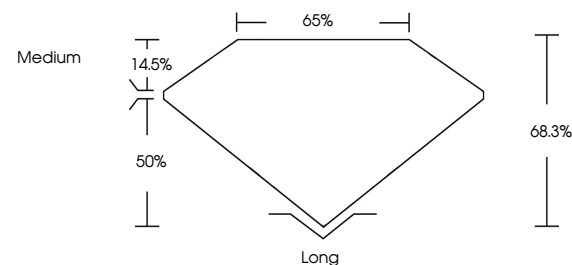
Color Grade **H**

Clarity Grade **VVS 2**

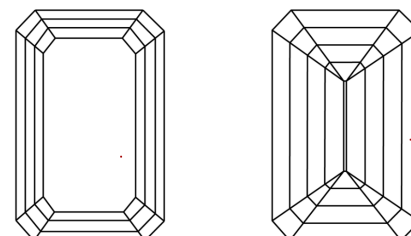


Sample Image Used

**PROPORTIONS**



**CLARITY CHARACTERISTICS**



**KEY TO SYMBOLS**

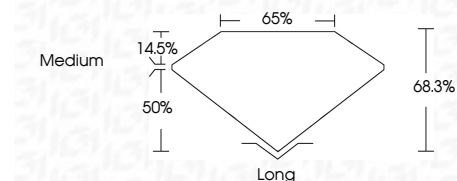
Red symbols indicate internal characteristics.  
Green symbols indicate external characteristics.

**COLOR**

D E F G H I J Faint Very Light Light

**CLARITY**

FL	IF	VVS <sup>1-2</sup>	VS <sup>1-2</sup>	SI <sup>1-2</sup>	I <sup>1-3</sup>
Flawless	Internally Flawless	Very Very Slightly Included	Very Slightly Included	Slightly Included	Included



**ADDITIONAL GRADING INFORMATION**

Polish **EXCELLENT**

Symmetry **EXCELLENT**

Fluorescence **NONE**

Inscription(s) **IGI LG756583550**

Comments: This Laboratory Grown Diamond was created by Chemical Vapor Deposition (CVD) growth process. Type IIa



December 13, 2025  
IGI Report No LG756583550  
EMERALD CUT

2.98 CARATS  
H

9.57 X 6.79 X 4.64 MM

Color Grade  
Clarity Grade  
Depth  
Table  
Girdle  
Medium

Culet  
Polish  
Symmetry  
Fluorescence  
Inscription(s)

EXCELLENT  
EXCELLENT  
NONE  
IGI LG756583550

Comments: This Laboratory Grown Diamond was created by Chemical Vapor Deposition (CVD) growth process. Type IIa