



ELECTRONIC COPY

LG756587945
Report verification at igi.org



December 26, 2025
IGI Report Number **LG756587945**
Description **LABORATORY GROWN DIAMOND**
Shape and Cutting Style **CUT CORNERED
RECTANGULAR MODIFIED
BRILLIANT**
Measurements **8.45 X 6.23 X 4.00 MM**
GRADING RESULTS
Carat Weight **1.79 CARAT**
Color Grade **D**
Clarity Grade **VS 1**

December 26, 2025
IGI Report Number **LG756587945**
Description **LABORATORY GROWN DIAMOND**
Shape and Cutting Style **CUT CORNERED RECTANGULAR
MODIFIED BRILLIANT**
Measurements **8.45 X 6.23 X 4.00 MM**

GRADING RESULTS

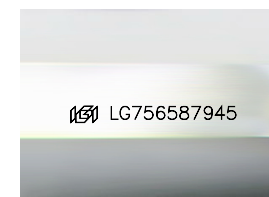
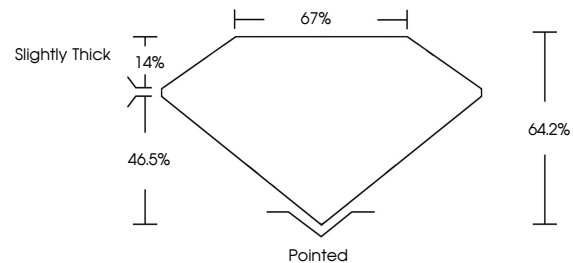
Carat Weight **1.79 CARAT**
Color Grade **D**
Clarity Grade **VS 1**

ADDITIONAL GRADING INFORMATION

Polish **EXCELLENT**
Symmetry **EXCELLENT**
Fluorescence **NONE**
Inscription(s) **IGI LG756587945**

Comments: As Grown - No indication of post-growth treatment.
This Laboratory Grown Diamond was created by High Pressure High Temperature (HPHT) growth process. Type II

PROPORTIONS



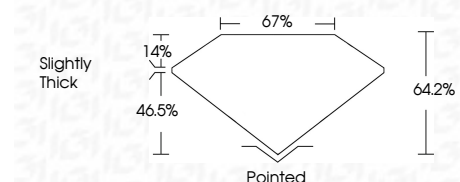
Sample Image Used

COLOR

D E F G H I J Faint Very Light Light

CLARITY

FL	IF	VS ¹⁻²	VS ¹⁻²	SI ¹⁻²	I ¹⁻³
Flawless	Internally Flawless	Very Very Slightly Included	Very Slightly Included	Slightly Included	Included



ADDITIONAL GRADING INFORMATION

Polish **EXCELLENT**
Symmetry **EXCELLENT**
Fluorescence **NONE**
Inscription(s) **IGI LG756587945**
Comments: As Grown - No indication of post-growth treatment.
This Laboratory Grown Diamond was created by High Pressure High Temperature (HPHT) growth process. Type II



IGI



December 26, 2025
IGI Report No LG756587945
CUT CORNERED RECT. MODIFIED BRILLIANT
8.45 X 6.23 X 4.00 MM
Carat Weight 1.79 CARAT
Color Grade D
Clarity Grade VS 1
Depth 64.2%
Table 14%
Girdle 67%
Slightly Thick
Culet Pointed
Polish EXCELLENT
Symmetry EXCELLENT
Fluorescence NONE
Inscription(s) IGI LG756587945

Comments: As Grown - No indication of post-growth treatment.
This Laboratory Grown Diamond was created by High Pressure High Temperature (HPHT) growth process. Type II