



# INTERNATIONAL GEMOLOGICAL INSTITUTE

ELECTRONIC COPY

## LABORATORY GROWN DIAMOND REPORT

December 18, 2025  
IGI Report Number **LG756592702**  
Description **LABORATORY GROWN DIAMOND**  
Shape and Cutting Style **OVAL BRILLIANT**  
Measurements **6.55 X 4.54 X 2.86 MM**

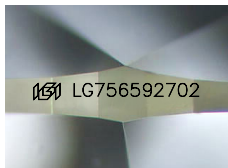
### GRADING RESULTS

Carat Weight **0.55 CARAT**  
Color Grade **G**  
Clarity Grade **VVS 2**

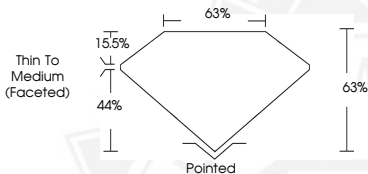
### ADDITIONAL GRADING INFORMATION

Polish **GOOD**  
Symmetry **GOOD**  
Fluorescence **NONE**  
Inscription(s) **IGI LG756592702**

Comments: As Grown - No indication of post-growth treatment. This Laboratory Grown Diamond was created by High Pressure High Temperature (HPHT) growth process.  
Type II  
Faint Blue



Sample Image Used



December 18, 2025  
IGI Report Number **LG756592702**  
OVAL BRILLIANT  
LABORATORY GROWN DIAMOND  
**6.55 X 4.54 X 2.86 MM**  
Carat Weight **0.55 CARAT**  
Color Grade **G**  
Clarity Grade **VVS 2**  
Polish **GOOD**  
Symmetry **GOOD**  
Fluorescence **NONE**  
Inscription(s) **IGI LG756592702**

Comments: As Grown - No indication of post-growth treatment. This Laboratory Grown Diamond was created by High Pressure High Temperature (HPHT) growth process. Type II Faint Blue



December 18, 2025  
IGI Report Number **LG756592702**  
OVAL BRILLIANT  
LABORATORY GROWN DIAMOND  
**6.55 X 4.54 X 2.86 MM**  
Carat Weight **0.55 CARAT**  
Color Grade **G**  
Clarity Grade **VVS 2**  
Polish **GOOD**  
Symmetry **GOOD**  
Fluorescence **NONE**  
Inscription(s) **IGI LG756592702**

Comments: As Grown - No indication of post-growth treatment. This Laboratory Grown Diamond was created by High Pressure High Temperature (HPHT) growth process. Type II Faint Blue



THIS DOCUMENT WAS PRODUCED WITH THE FOLLOWING SECURITY MEASURES: SPECIAL DOCUMENT PAPER, INK SCREENS, WATERMARK, BACKGROUND DESIGNS, HOLOGRAM AND OTHER SECURITY FEATURES NOT LISTED AND DO EXCEED DOCUMENT SECURITY INDUSTRY GUIDELINES.

For terms & conditions and to verify this report, please visit [www.igi.org](http://www.igi.org)